

Making a Difference

Since 1946



Impact Report 2003 - 2022



Over £25,000,000 granted to local charities



It is with great pleasure, that I present this impact report illustrating the profound difference that Ulster Garden Villages has been able to deliver to people's lives across Northern Ireland over the past 20 years. It is a celebration of collaboration and partnership through the words of those in receipt of funding. Their achievements are truly inspiring, and it is hoped that they give an insight into the role we can play through collaboration with others in Making a Difference.

Established in 1946, Ulster Garden Villages was registered under the Industrial and Provident Societies Act (NI) with the objective of providing good quality housing and associated amenities for the disadvantaged and aged. Whilst this objective continues today, in 1983 Ulster Garden Villages also became a registered charity allowing it to distribute surplus funds for general charitable purposes. Since then, Ulster Garden Villages has invested in the future of Northern Ireland, building long term and trusted partnerships. Over the years it has been a privilege to witness the growth of the charities we have helped since our initial funding. Ulster Garden Villages prides itself with being able to provide important initial seed funding to many local projects, providing charities with early financial support. Our early support and advice give confidence in the project to other funders. This helps leverage further funding from a variety of both private and public bodies, maximising the project's success and social impact, leaving a legacy for future generations.

Grants ranging from £250 to £1-5 million are assessed on application within the following areas: Health and disability, Education and Training, Arts and Culture, Heritage and

Environment, and Community with over £1M donated annually. As a result, I am delighted to report that Ulster Garden Villages has granted over £25m to local charities during the previous 20 years. The grants we provide help to support the incredible work that local charities undertake every day. Without the care and dedication of the charities and their volunteers, the grants we provide would simply not have such a positive impact. It is important that this report reflects the views of these remarkable people and those who benefit from the vital care they deliver. Through their words, the real impact of the work Ulster Garden Villages undertakes can be seen.

I hope that you will agree that the stories from these organisations make for positive reading, and hearing how Ulster Garden Villages has helped those in need throughout Northern Ireland makes our efforts worthwhile. Whilst the history of Ulster Garden Villages extends beyond 77 years, we chose to celebrate the last 20 years of impact to mark the retirement of our Chairman Dr Tony Hopkins. I would like to take this opportunity to thank Tony for his time and excellent stewardship over the last two decades.

Reflecting on the impact we have made across all the funding categories, we now look forward to the future with a new sense of enthusiasm and are excited to continue making a lasting difference, to people's lives across Northern Ireland.

- Susan Crowe, Chair

"Pioneering and volunteering lie at the heart of Ulster Garden Villages' efforts to make a difference to the lives of people across Northern Ireland over its seventy seven year history."

- Dr Tony Hopkins CBE



Retiring Chairman's Remarks

Pioneering and volunteering lie at the heart of Ulster Garden Villages' efforts to make a difference to the lives of people across Northern Ireland over its seventy seven year history.

It was created in 1946 to pioneer a Garden Village approach to the provision of much needed affordable housing in Northern Ireland after the devastation of the Second World War. The recently refurbished Merville Garden Village on the north shore of Belfast Lough and its near neighbour, Abbots Cross, stand as testament to this impressive contribution to providing attractive and affordable homes in delightful surroundings.

For some forty years it has used income from its housing and investment activities to help launch and develop charitable and philanthropic projects, large and small, across Northern Ireland and in fields as diverse as health provision and homelessness, from heritage buildings to community arts groups. From purchasing both the PET/CT scanners which serve all our citizens from their bases in the Royal Victoria Hospital and the Belfast City Hospital, the most recent costing over £1.5 million, to giving vital early help to a multitude of smaller community based projects Ulster Garden Villages has worked to make life better for countless families and men, women and children in need.

In just the last two decades our donations have exceeded £25 million and our stewardship of our financial resources leaves us well provided to do as much or more in the coming decades. The publication of this report is intended to encourage decision makers to be aware of our possible early involvement in future significant projects which fit our support criteria.

My predecessor, Sir Desmond Lorimer, acted as Chairman for over twenty five years and was instrumental in building the reserves which have stood us in such good stead. When he invited me to join the volunteer Management Board in 2003, I had already become aware of the Charity through my involvement with raising funds for The Prince's Trust, Relate and Mencap and I was very pleased to accept the invitation. I was honoured when my volunteer colleagues on the Committee elected me as Chairman some two years later and continued to show confidence in me until I stepped down at our AGM in June this year.

In the two decades intervening I have come to appreciate fully the vast contribution made by volunteers both in our own organisation and equally in the hundreds of charities which we have supported in their vital work. I have also gained a sense of the satisfaction in being involved in giving thought and time to helping those less fortunate than oneself. It has been truly a privilege to be in this position for this time and I want to thank those with whom I have worked both here in our Committee setting and in the charities which we have supported. Our small team in the office, Mrs Valerie Ingram and Mrs Ruth Culbert, also act like volunteers as they consistently go well beyond the call of duty and we could not function without them. I thank them for their dedication. I am very confident that we will continue to make a great difference in the years ahead under the new Chair, Mrs Susan Crowe, who has served on the Committee for many years and who was elected by her colleagues to take on the role. I wish her and all who serve in the future great success.

- Dr Tony Hopkins CBE

Contents

Section One

Health & Disability 10-45

National Autistic Society NI	12
Action Cancer	14
Brain Injury Matters	18
Cancer Focus	20
Marie Curie	22
Mencap Northern Ireland	24
AGE NI	26
Northern Ireland Hospice	28
Cancer Fund for Children	32
Croft Communities	36
Destined	38
Belfast Health & Social Care Trust	42

Section Two

Education & Training 46-63

Ulster University	48
The Integrated Education Fund	52
The Prince's Trust	54
Queen's University, Belfast	56
Belfast Activity Centre	60

Section Three

Arts & Culture 64-79

Ulster Orchestra	66
Youth Action NI	70
Theatre & Arts Spaces	74

Section Four

Heritage & Environment 80-97

Woodland Trust	82
Lagan Gateway	86
Gobbins Path	90
Hearth	94

Section Five

Community 98-107

Habitat for Humanity	100
East Belfast Mission	104

Building Communities 108-113

Capital Projects 114-117

Donations 2003-2022 118-123

Making a Difference

Grants Awarded
£25 Million

545

Funded Projects

Over
32,000
Volunteers Supported

Interest
Free Loans
£3 Million

Leverage of UGV funding
Multiplier effect
Over
£125 Million

100
Number of buildings
Restored, Refurbished,
Rebuilt & Repurposed

More than
625,000
Beneficiaries



Section One

Health & Disability

Health & Disability

National Autistic Society Northern Ireland

Ulster Garden Villages has provided vital support of £40,000.

Ulster Garden Villages has provided vital support of £40,000 to the National Autistic Society Northern Ireland to provide autistic people, and their families and carers, with the support and opportunities they need to thrive within our communities.

In 2017 a grant contributed toward the equipment and furnishing of a vital sensory room at the heart of their brand-new specialist day centre in Carryduff, the first ever of its kind in Northern Ireland. Today the sensory room is in full use every day into the evening, creating a relaxing, calming and yet stimulating environment to help autistic adults and children to cope better with the world around them.

In 2021 a pledge of 3-year funding enabled the National Autistic Society to draw down a range of other grants to create Support for Life – a 3-year programme of services for autistic people in Northern Ireland, empowering them to learn vital life skills, grow their independence and thrive. Support for Life is also enabling families to better understand, care for and support their autistic loved one, providing a full wrap-around service.

“Connor has been attending YC [the Support for Life Afternoon Club] every Wednesday for several months in the NAS Centre. Without a doubt this has greatly enriched Connor’s life. Connor has just turned 13 and unlike other teenagers he has no clubs to attend after school. Accessing the community with Connor comes with huge challenges and very often the only activity suitable is going for a drive. This means that Connor is missing out on valuable learning experiences.

Connor loves the Centre at Carryduff. The building is safe and secure. The staff are trained to look after Connor and ensure that all his sensory needs are being met. Connor makes great use of the indoor and outdoor facilities. The Centre is spacious and very well equipped. He particularly loves jumping on the trampoline, relaxing on the heated water mattress and more recently having some time in the dark den. While Connor is at YC we can relax and have some much-needed time to ourselves. Connor loves his time at the Centre we are so grateful that he has had the opportunity to attend.”
- Connor’s Mum



Health & Disability

Action Cancer

Over the last three decades Ulster Garden Villages has provided Action Cancer with £425,500 in funding towards their local breast screening service.



Action Cancer was established in 1973 and in 2023 they celebrate 50 years in existence.

Gareth Kirk, Action Cancer - "We have sought early advice from Ulster Garden Villages on all occasions as we endeavoured to identify funding opportunities for the introduction of innovations for delivering our mission of 'saving lives and supporting people' affected by cancer throughout Northern Ireland.

Working closely together we have made a real and lasting difference to women and their families all across NI and we are incredibly grateful for our association with UGV. 215,000 women have used the service to date."

Support from UGV has been the cornerstone of our fundraising campaigns for our breast screening service, attracting matching funds to enable us to innovate our screening service over the years.

‘Our lasting legacy is that we sit at the forefront of breast screening technology...’

Breast cancer is the most common cancer type among females in NI accounting for 30% of all cancer diagnoses among women- 1,457 are diagnosed and 314 die from the disease every year.

Action Cancer offers a unique screening programme, providing 8,000 mammograms a year to women aged 40-49 and 70+ (women who fall outside the national breast screening age range) who reside in NI.

This free service is not available anywhere else in the UK or Ireland. Breast screening is for well women who have no signs or symptoms and is the most effective tool for picking up cancers at an early and treatable stage.

With financial support from Ulster Garden Villages we have utilised only the very best equipment and the latest technological advances. Our lasting legacy is that we sit at the forefront of breast screening technology, being the only unit in the UK and Ireland who currently utilise Tomosynthesis/3D breast imaging in the screening environment- a technology which can locate cancers which are the size of a grain of rice.

Action Cancer detects 6 cancers for every 1,000 screenings, with the majority of women receiving reassurance but through the use of Tomosynthesis just 4% of women screened are referred for further assessment due to the enhanced imaging it provides.



In May 2018 Action Cancer hosted an International Conference on Breast Imaging and Cancer Detection at Queen's University Belfast. Speaking at the event, Dr Mike Linver, who led the USA Government's task force on mammography said: "The introduction of DBT, characterises Action Cancer's pioneering role in breast cancer detection. It is quite remarkable that a small charity in N. Ireland is making such an impact on the world stage."



Ulster Garden Villages has provided funding to our Big Bus which travels to 200 locations across NI annually and enables access to our breast screening service in areas of deprivation (where cancer incidence is higher) and in hard to reach communities.

Martine Gilmour from Antrim was 46 when her breast cancer was detected on board the Big Bus. Following surgery and radiotherapy Martine is now cancer free and keeping well: "I believe that the Big Bus saved my life through early detection. My cancerous lump could not be felt on physical examination and I was not due to attend the NHS until the age of 50 so who knows how big and at what stage the tumour would have been at by that point. Thank you Action Cancer for bringing this wonderful service across NI to the doorsteps of women like me."

Health & Disability

Brain Injury Matters

Ulster Garden Villages provided an investment of £30,000 over 3 years to allow us for the first time to employ a specialist arts and well-being coordinator.



UGV has been a long term supporter of Brain Injury Matters since it was formally incorporated in 2013.

Joe McVey - Chief Executive Officer, Brain Injury Matters said, "In 2015, UGV provided an investment of £30,000 over 3 years to allow us for the first time to employ a specialist arts and well-being coordinator. This role has transformed the service offered to our participants. We have been able to offer an annual arts and creative programme which has facilitated our participants to take part in visual arts, creative writing, dance, theatre workshops, and a new choir the 'Enthusiast' exhibiting their work in public galleries and performances in the MAC and playing a significant role in the NI Mental Health Festival and Eastside Arts.

Building upon this success in 2022 UGV invested a further £12,000 to support BIM to redesign its existing premises, creating a designated Arts and Wellbeing Hub and Creations Gallery. This funding has unlocked other funding which allowed this project to be delivered successfully creating an inclusive and fully accessible space.

The contribution of Ulster Garden Villages to the development of BIM has been very significant in supporting the growth of services and matching our ambition to respond to the evolving needs of our client group. UGV's ongoing funding has also been instrumental in allowing BIM to leverage support from other funders both statutory and voluntary as the UGV 'stamp of approval' undoubtedly provides confidence to other funders".

Health & Disability

Cancer Focus

Since 2005, Ulster Garden Villages has donated £240,000 to Cancer Focus Northern Ireland.

Cancer Focus is a leading Northern Ireland cancer charity which since 1969, has worked tirelessly to reduce the impact of cancer on local people's lives. The charity provides care and support services for cancer patients and their families; offers a range of cancer prevention programmes to help people lessen their risk of getting cancer; funds scientific research into the causes and treatment of the disease and campaigns for better health policy to protect our community and its future. All the money raised and donated to Cancer Focus NI is spent in Northern Ireland.

Cancer Focus NI received funding from Ulster Garden Villages in 2013 to help purchase a new van for their 'Keeping Well' Service. This is a regional service that delivers health promotion messaging directly into the heart of local communities and businesses right across Northern Ireland. A dedicated team of health improvement officers and cancer prevention nurses provide a range of health promotion activities focusing on reducing the risk of cancer, raising awareness of red flag signs and symptoms and signposting to appropriate support services.

The 'Keeping Well' Service prides itself at highlighting unidentified health needs within local communities through one-to-one support, reaching marginalised groups by actively engaging with 'hard to reach communities', strengthening community networks through the various partnerships forged at local level and most importantly increasing accessibility to healthcare provision by removing barriers to participation.

Richard Spratt, Chief Executive Cancer Focus NI, commented "Since receiving the generous funding from Ulster Garden Villages in 2013, the 'Keeping Well' service has reached approximately 35,000 people across all facets of the service and approximately 14,000 individuals who had a health check were referred on to a health professional to discuss their results further.

The funding has enabled the 'Keeping Well' Service to be a vital resource to local communities across Northern Ireland and we receive feedback from clients who tell us how the health checks have changed their lives and made a huge difference to their overall wellbeing. They appreciate how the 'Keeping Well' Service can access them directly on their doorstep and how it has been a positive step in reconnecting them with their GP or health professional. The funding from Ulster Garden Villages have helped us achieve that and we are extremely grateful to them."



Health & Disability

Marie Curie

Grants were awarded to Marie Curie in the sum of £340,000. The largest of which was for the refurbishment of the Marie Curie Hospice at Kensington Road, Belfast which includes a planted courtyard which can be accessed directly from adjacent patient bedrooms and therapy rooms. Eighteen bedrooms with en-suite facilities were also provided in the extension which was completed in 2012.



Ulster Garden Villages Limited provided the inaugural gift which helped set up the first Breathing Space Clinic at the Marie Curie Hospice, Belfast – an outpatient clinic to help manage symptoms associated with terminal lung conditions. Ulster Garden Villages were also instrumental in helping Marie Curie to develop our Rapid Response Nursing Service in Northern Ireland.

Rapid Response provides urgent, expert nursing support to people in their homes and in care homes at times of crisis. Rapid Response nurses play a critical role in ensuring that people at the end of life have the right support when they need it most. This helps patients to remain in the place they call home, with the people they love closest to them. Rapid Response teams provide out-of-hours help for symptoms, give

expert information and support to family members and carers and ultimately, help ensure a better quality of life and a good death.

Paula Heneghan, Associate Director for Marie Curie NI commented: “I’d like to offer my heartfelt congratulations to Ulster Garden Villages on all their efforts over many years. Marie Curie NI is hugely thankful to Ulster Garden Villages for their financial support and belief in our work.

From their initial support to help rebuild our Belfast Hospice into an 18-bed purpose-built unit to constantly being by our side as we continue to evolve and develop hospice and community services to meet the changing needs of terminally ill people in Northern Ireland. We can’t thank you enough for your continued support and partnership.”

Health & Disability

Mencap Northern Ireland

Throughout the last 20 years, Ulster Garden Villages has provided an incredible £380,000 of support to Mencap.



Ulster Garden Villages has been a generous friend and vital support to the work of Mencap throughout its' 58 year existence in Northern Ireland. Mencap NI's vision is for Northern Ireland to be the best place in the world for people with a learning disability to live happy and healthy lives.

Throughout the last 20 years, Ulster Garden Villages has provided an incredible £380,000 of support to Mencap. These funds have supported a wide variety of work across Northern Ireland for people with a learning disability. This includes the 'Big Step Forward Campaign', which enabled the build of a state of the art Children's Centre and accessible playground in Newtownbreda. It also enabled Mencap and Golden Lane Housing to refurbish two properties in Bangor to create accessible, comfortable homes for people with a learning disability. And most

recently, it has involved a pledge towards a therapy room in Newtownbreda which will support the wellbeing of the people Mencap support.

Grainne Close, Director of Mencap NI has said, "Ulster Garden Village is an incredibly valued part of the Mencap family, of which Dr Tony Hopkins has played a key role. Ulster Garden Villages has shown its dedication and commitment to the 42,000 people with a learning disability across Northern Ireland through their support of our essential work. Their generosity is hugely appreciated and helps us in our efforts to ensure people with a learning disability are able to live the lives they choose. We would like to thank Dr Hopkins for his support throughout his term and wish him every happiness in this next chapter."

Health & Disability

AGE NI

Supported with early funding from Ulster Garden Villages which was instrumental in getting the 'My Home Life' project off the ground.



"The 'My Home Life (MHL) Leadership Support Programme' for care homes was supported with early funding from Ulster Garden Villages which was instrumental in getting this project off the ground. At its core, the 'My Home Life' programme recognises that people who care for the frailest and most vulnerable people in our society deserve to be supported in the work they do. The Ulster Garden Villages funding recognised this and over the past 10 years with additional support from the Department of Health, 194 care home staff have completed the 'My Home Life programme'. Participants have reported improved quality of life for residents, increased levels of engagement with families and a significant reduction in stress. Our partnership with Age NI and Ulster Garden Villages is key to this success and we look forward to continuing this work in this future".

- Professor Assumpta Ryan, Ulster University

"Age NI is proud to be associated with the 'My Home Life programme' from its inception and Ulster Garden Villages helped to fund the project at the beginning. The fact that the programme will now be embedded as part of the leadership approach in all care homes in Northern Ireland is testament to the best practice and ethos of the delivery team. It is vital that we support our patients, families and staff in our nursing and residential homes and 'My Home Life NI' is critical to supporting the transformational change required."

- Linda Robinson, CEO Age NI

Health & Disability

Northern Ireland Hospice

Our grants are dedicated to enhancing the quality of life for local individuals in need of palliative care, while also providing essential support to their families and caregivers.



NI Hospice is a vital part of the Northern Ireland healthcare system, which aims to enhance the quality of life for local individuals living with life-limiting and life-threatening, while also providing family-centred care and support to their families.



Since 1991, Ulster Garden Villages has proudly supported NI Hospice. Their very generous contributions have helped to facilitate the construction of the Children's Hospice in Newtownabbey and played a pivotal role in establishing the new state-of-the-art Adult Hospice on Somerton Road in 2012. The most recent grant of £250,000 has funded four of the Hospice's Specialist Community Palliative Care Nurses over the next five years who will deliver high-quality, compassionate, and person-centred care to local individuals and families in their own homes.

Dr Gerry Millar MBE, Chairman of the Northern Ireland Hospice said;

"I am profoundly grateful to Ulster Garden Villages for their unwavering dedication to supporting both Northern Ireland Hospice and the Children's Hospice. Their pivotal role in funding the Children's Hospice and their instrumental contribution to the construction of the new Somerton Road Hospice in 2012, demonstrate an unwavering commitment to ensuring that Northern Ireland Hospice can continue its mission of providing essential care and support to local people in their time of need.

Without the steadfast support and partnership with local organisations like Ulster Garden Villages, Hospice would not have been able to provide care and support to countless individuals in need over the years. Their generous contributions have created a legacy of compassion, care, and support, and will ensure that we can continue to be there for local people and their families for generations to come."

Health & Disability

Cancer Fund For Children

Cancer Fund for Children has been supported by Ulster Garden Villages to ensure no child has to face cancer alone. Funding of £150,000 in support of this work has been provided.



The early support of Ulster Garden Villages allowed Cancer Fund for Children both the funding and the confidence needed to embark on the first major capital project, the Narnia Log Cabin – a unique facility designed by and for teenagers living with cancer.

The groupwork programmes at Narnia allow children and young people with a similar cancer experience to build friendships and connections, gain support, develop skills and cope better with cancer in a supportive group environment. Since then, Narnia has offered residential support to over 2,500 young people living with the impact of cancer in their family.

Cancer Fund for Children continued

Ulster Garden Villages has also funded the work of Daisy Lodge, not only with the capital build but with ongoing support for families benefiting from a therapeutic short break.

A therapeutic short break at Daisy Lodge allows families the opportunity to spend quality time together in a safe and supportive environment, far removed from the pressures of cancer treatment and hospital wards. Cancer Fund for Children have supported over 3,600 families with a short break at Daisy Lodge and delivered countless complimentary therapies and family workshops throughout this time to help reduce stress and encourage relaxation for the whole family.

Family testimonial following their short break at Daisy Lodge.

“It has meant so much! We are at a point of my diagnosis where it's really impacting on all our mental health and Daisy Lodge has been the most positive experience for us to be together as a family and just enjoy our time making really special memories, I'm truly grateful that we have had the opportunity to come stay here.”

“The incredible support from Ulster Garden Villages has had such a lasting impact over the years allowing young people and families the space to reconnect away from the hospital environment during such a difficult time in their lives. The funding received has helped us reach significant milestones as an organisation and made a crucial difference in the lives of children and young people living with cancer.”

- Phil Alexander, CEO, Cancer Fund for Children.



Health & Disability

Croft Communities

The aim of Croft is to provide accommodation in a homely and caring environment, and to help their residents achieve their full potential in the community.



The Croft Communities (Croft), 71 Bloomfield Road, Bangor, is a residential home for adults with a learning disability. The aim of Croft is to provide accommodation in a homely and caring environment, and to help residents achieve their full potential in the community. Croft opened in 1984 providing accommodation for eight long-term residents, with one short-time respite place.

To meet the needs of the community, Croft has evolved and now offers residential care, supported living, day services, and respite facilities. Croft currently provides residential accommodation to forty-two service users plus respite accommodation in Croft Lodge - serving around eighty families within the locality. Whereas funding of the basic capital, running and maintenance costs is provided through Government agencies, Croft is required to raise the funds necessary to provide any additional design features and finishings needed to improve the quality of our services.

Examples are, design features in the new Mayne House to accommodate older residents and those with Dementia; Croft Lodge Respite Unit; finishings in new and refurbished houses, including flooring, bedding, furniture, and curtains; the fitting out of the existing barns to accommodate social activities and training; the Croft Memory Garden; Croft Day Services. Croft, over the years, has had great help and support from Ulster Garden Villages, equating to the financial value of £277,500. This funding has not only enabled Croft to increase the range of services, and the quality of life of our service users, but has been a great encouragement to staff and voluntary management committee over the years. The social and holistic value from the donations is immeasurable as too are some of the positive impacts that they have had on our residents.



Health & Disability

Destined

Ulster Garden Villages has given grants totalling £60,000 to Destined Limited toward the refurbishment and renovation of their existing landmark Foyle Railway Museum building.



Ulster Garden Villages has given grants totalling £60,000 to Destined Limited toward refurbishment and renovation of their existing landmark Foyle Railway Museum building located at Foyle Road, Derry.

Destined Limited is a learning disability support organisation based in the North-West. They seek to empower people with a learning disability to develop skills which will help them to become more involved in their community and everyday life.

In 2018, Ulster Garden Villages supported the North-West Centre for Learning Disability (NWCLD) which is the first of its kind in Northern Ireland. This underused contested space was located on an interface and attracted anti-social activity. Now completed and transformed, it delivers a complete package of services for people with learning disabilities (from birth to old age) and their families and carers. Destined currently provides services to approximately 300 people with a wide range of social, health and employment

initiatives. The centre also houses a number of clubs such as farming, drama, fishing along with an organic garden and horticultural project and an urban social farm. The refurbishment, renovation and repairs were undertaken to provide additional space for the delivery of services and programmes to adults and young people with learning disabilities. The centre is now a safe, healthy and comfortable environment for everyone.

A further grant was given toward helping to refurbish the Railway Museum space. The Foyle Valley Railway and Transport Museum includes an interpretive centre, research and recording and staff training for roles such as tour guides. All these refurbishments were designed to provide a facility to provide inclusive access to museum visitors including people with disabilities and to also create an environment that was pleasant and clean for the Destined volunteer Tour Guides.



Dermot O'Hara, Destined CEO said:
"We have had a very positive relationship with Ulster Garden Villages over the years. The staff are very pleasant, and they were very helpful with the application process that was simple and straightforward. The funding support allowed us to target our refurbishment to get the projects over the line to create additional infrastructure that was accessible to our members. These pleasant spaces, that are used for learning and training, have allowed us to expand our services."

"An important part of the work of Destined is developing links with our community to be pro-active in the process of social inclusion and integration for people with learning disabilities and these facilities allow this to happen."

He continued "We used to operate from a one roomed Centre that had limited use and now we have a purpose-built learning disability Centre, and a totally refurbished Railway Museum with plenty of training and activity rooms. Ulster Garden Villages were part of this achievement."



Health & Disability

Belfast Health & Social Care Trust



Over 20 years ago Ulster Garden Villages provided funding for Northern Ireland's first PET/CT scanner (only the second PET/CT in the United Kingdom). A further capital commitment of £1.5 million was given to the Belfast Health and Social Care Trust for the purchase of a second PET/CT scanner. These PET/CT scanners have provided a vital diagnostic imaging service, critical to the future health and well-being of Northern Ireland's population. One of the key uses of PET/CT imaging is for the accurate evaluation of the function and extent of various cancers in the body. Further growth in the area of PET/CT imaging is anticipated and is driven by increasing prevalence of cancer, reliance by clinicians on technology for

diagnosis and new applications for PET/CT imaging including the early identification of Alzheimer's Disease. In February 2020 enabling works were completed at the Lower Ground floor of the NI Cancer Centre, Belfast City Hospital to facilitate the installation of the new PET/CT Scanner and other specialist supporting equipment. Since its installation many thousands of patients have had their PET/CT scans at Belfast City Hospital, in addition to the thousands who have had PET/CT scans in the Royal Victoria Hospital. Accurate knowledge of the extent and severity of disease through PET/CT imaging will help to ensure appropriate treatment options for those diagnosed with cancer and other conditions.

In 2019, grant funding was provided to the Ophthalmology Unit at the Royal Victoria Hospital, Belfast toward hardware for an existing cataract surgical simulator to provide simulated cataract surgery for postgraduate surgical trainees. Simulated surgery is a risk-free method to allow surgical trainees to develop the necessary surgical skills while eliminating risks to patients. The simulator required a software upgrade to enable the simulator to provide increasingly complex scenarios for trainees to develop further their surgical experience. More specialised training is now required in the field of vitreoretinal surgery so corresponding hardware is also required. The upgrade provides more challenging and realistic cataract and vitreoretinal surgical techniques scenarios for trainees and is in line with surgical post graduate training requirements outlined by the Northern Ireland Medical and Dental Training Agency for Ophthalmology. Virtual training has been shown to significantly improve the quality of surgical training and reduce patient complications. Approximately 9,500 cataract operations take place in Northern Ireland per annum and the simulation equipment supports the training of the staff who carry out these procedures.

Ulster Garden Villages has also supported an orthopaedic simulation centre and training room in Musgrave Park Hospital, Belfast with a donation to the Trauma & Orthopaedics Research Charity. The Virtual Reality (VR) simulation equipment, computers, and associated facilities will enable orthopaedic surgeons and trainees to enhance their skills in arthroscopy. Arthroscopy is a minimally invasive surgical procedure on a joint in which an examination and sometimes treatment of damage is performed using an arthroscope, an endoscope that is inserted into the joint through a small incision.

Ward 10 North at the Belfast City Hospital (BCH) provides specialist care for individuals who have Haematology cancers. The Ward is the only clinical unit in Northern Ireland that can provide Bone Marrow Transplantation and certain chemotherapy drugs.

The Unit looks after some of the sickest patients who need treatment for blood disorders. This includes people needing chemotherapy and stem cell transplant to treat blood cancers like Leukaemia, Lymphoma and Myeloma. There are two types of Stem cell transplant (Bone Marrow transplant) carried out at 10 North-Autologous Transplant where an individual's own stem cells are collected before having very strong chemotherapy treatment. The individual's stem cells are then returned after the chemotherapy has been given. The second is Matched Donor Allogenic Transplant where a sibling of a patient donates his/her cells which are given to the patient following completion of chemotherapy. Around 350 people are admitted to 10 North each year and they often have to stay there for many weeks and months. Over the last five years, 345 transplants have been carried out at Belfast City Hospital.

In 2001 Ulster Garden Villages provided substantial capital funding to establish Ward 10 North in the Belfast City Hospital Tower Block as Northern Ireland's adult inpatient ward for people who require specialist treatment for complex haematology disorders. The investment provided around 20 years ago years ago facilitated the centralisation of haematology treatment on the Belfast City Hospital site so that patients could readily access specialist care including bone marrow transplantation and high dose chemotherapies. It also created a leading-edge training environment for medical and nursing staff so that they could develop their skills, knowledge, and expertise in this provision of haematology care. A grant offer of £1.5 million has since been offered to the Belfast Health & Social Care Trust to help to create a new Haematology Unit based at Belfast City Hospital and which will help to develop the planned new clinical facility which will specialise in caring for people with different types of blood disorders.





Section Two

Education & Training



Education & Training

Ulster University

Community Scholarships - £750,000 awarded over 5 years.

This is an exciting new scholarship opportunity for local young people and it's wonderful that so many talented students can avail of support by way of a grant. The Community scholarships will make a real and meaningful difference to the students, their families, and over time their local communities. For Ulster Garden Villages it's about sharing in the vision of a brighter future for these young people and believing in them and giving them that extra help toward their higher education journey and their future. This partnership along with other donors will mean that even more young people will be able to study and succeed at Ulster University.

Ulster Garden Villages and Ulster University have a long history of working together on shared objectives to create real impact. Our support goes back to 2007 when UGV teamed up with The McGrath Trust to support life-saving research into heart failure. A £450,000 gift from Ulster Garden Villages supported Ulster University's Centre for Advanced Cardiovascular Research over a ten year period with research into advanced cardiac failure treatment. The study looked at mapping and diagnosis with the objective of bringing benefits to patients with heart disease via improved clinical outcomes and quality of life. This therefore positively impacted on healthcare burden reduction, morbidity and mortality, locally, nationally and globally. Initial support helped Ulster University to secure a further £24.4m in funding.

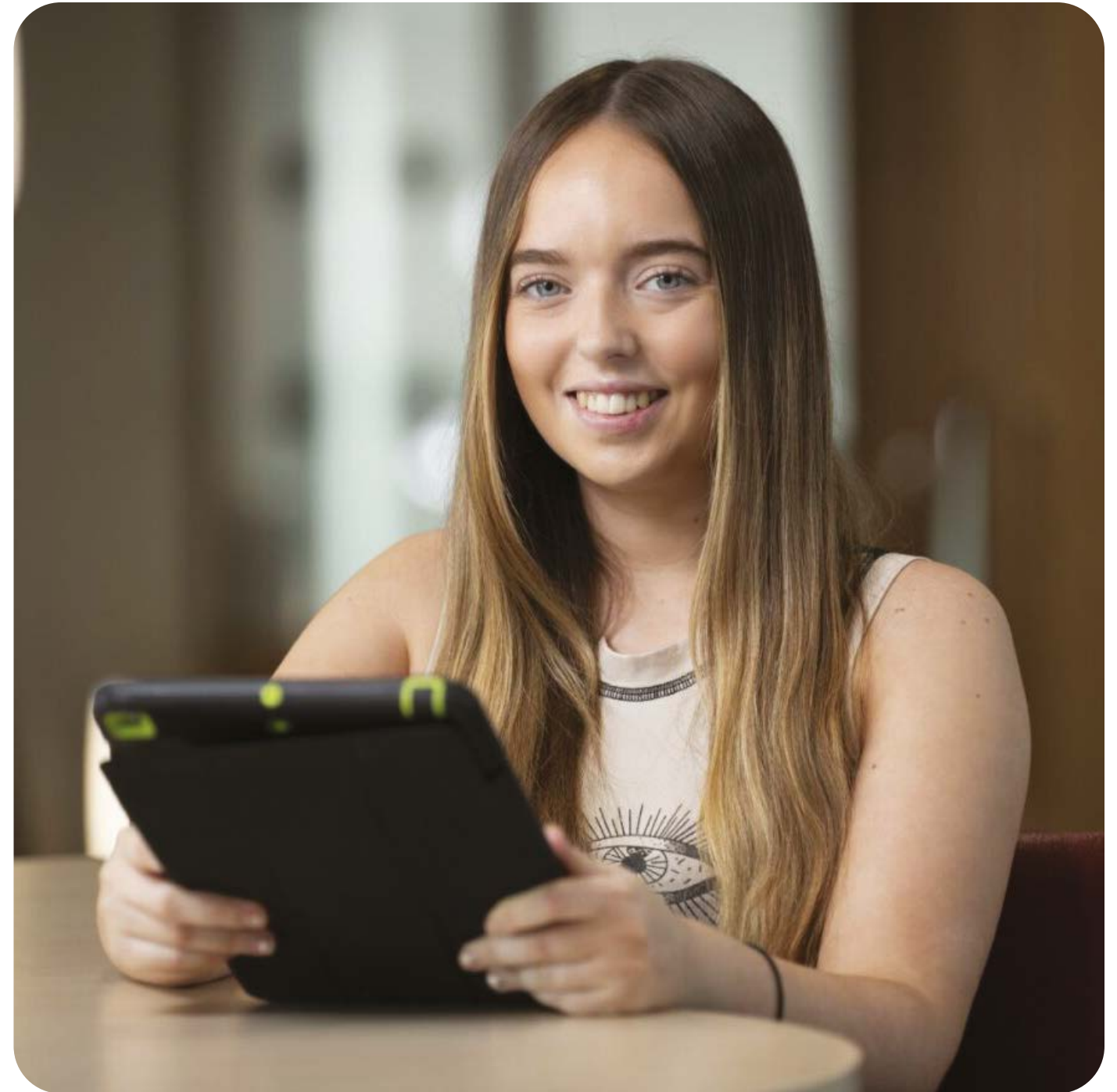
Professor Jim McLaughlin, Professor of Bioengineering and Director of the Nanotechnology and Integrated Bioengineering Centre (NIBEC) says: "The support from Ulster Garden Villages for the Centre for Advanced Cardiovascular Research has been the catalytic central factor for unfolding a chain reaction of high-quality cardiovascular research projects, linked to a high multiplicative factor of further successfully sourced funding. We continue to see an increasing trend of heart failure incidence with age as a major concerning issue for public healthcare providers, with the vast majority of cases occurring in patients above the age of 65. This funding has played a critical role in helping us to prepare the sector for this increase as a consequence of the population ageing. Thank you for this transformational support."

More recently, Ulster Garden Villages came on board as the Founding Partner of the Ulster University Community Scholarships which, since their launch in 2021, has supported 86 school/college leavers from disadvantaged backgrounds with a life-changing

scholarship of between £2,000-£3,000 a year for each year of their degree. These scholarships aim to widen access to higher education by removing the financial barriers for those with potential from disadvantaged backgrounds who might be deterred from progressing to university due to lack of finance. Support like this is needed more than ever given the ongoing impact of the pandemic on these young people's lives and educational journey and given the current increasing living costs. The scholarships aim to help students, like Jodie, who face barriers to education to realise their ambitions and reach their full potential.

"In primary school I was never able to do well regardless of how hard I tried, and I was told that I had no hope of doing the AQE. Until the middle of secondary school, I was the girl with no confidence. In Year 11, I started to receive tutoring, and with this, I slowly started to make my way up from the bottom of my classes. I was determined to prove everyone wrong. Now I am studying to become a teacher. I want to help children in the way I would have liked to have been helped myself. Without this scholarship, I would not have been able to progress to university. It has made the world of difference to me. Thank you very much for this life-changing opportunity and for supporting my goal to become the best teacher I can be, helping future generations on their often-challenging educational journeys."
- Jodie McCord, BA Hons English and Education, Coleraine Campus

This initial funding of £750,000 from Ulster Garden Villages also helped Ulster University to secure a further £508,000 from a range of donors including the Garfield Weston Foundation which means a further 73 students will be supported with these life-changing scholarships over the next 3 years.



Education & Training

The Integrated Education Fund

Ulster Garden Villages first grant to the fund was given in 1995 and since then regular grants have been made totalling £135,000.

Ulster Garden Villages has been long-standing supporters of the work of the Integrated Education Fund (The IEF) from shortly after its inception in the early 90s to the present day. Our first grant to the fund was given in 1995 and since then regular grants have been made totalling £135,000.

The journey to bring young people together in an education setting in Northern Ireland has taken vision and determination. Throughout the years there has been extensive work to promote respect for identity, diversity, and community cohesion through education. Building on the early work of those championing integrated education, today the IEF is supporting more schools than ever before, Ulster Garden Villages, in working with the Fund, hope to help to continue this incredible journey toward a shared and peaceful future for our young people.

The IEF, an independent charitable foundation, was established in 1992 to support the growth and development of Integrated Education, where children of all faiths and none are educated together and where pupils are encouraged to experience and celebrate their religious and cultural diversity. Research has indicated that children who attend Integrated schools have more opportunity to develop

friendships across the traditional religious divide in Northern Ireland.

Integrated Education is a grassroots and parent led initiative. Parents have either established new schools in their local community or existing schools have transformed to Integrated status through the process of a democratic parental ballot.

The first planned Integrated school, Lagan College, opened in 1981 with just 28 pupils. Today Lagan College is the most oversubscribed school in the whole of Northern Ireland, despite already educating over 1,400 pupils. In 2023 there were 70 Integrated schools, educating over 27,000 pupils including Nursery, Primary and Post Primary provision. In 2019, Ulster Garden Villages provided a three-year grant to support an innovative 'Integrate My School' initiative led by the IEF. This grant helped to contribute to 21 successful parental ballots being held in schools across Northern Ireland. The percentage voting in favour ranged from 71% to 100%. Since 2019, six of these schools have now reopened as Integrated schools with many of the others currently awaiting approval from the Department of Education. Demand for Integrated Education continues to grow.



Education & Training

The Prince's Trust

Since 2001, Ulster Garden Villages has supported The Prince's Trust to improve the lives of over 60,000 young people in Northern Ireland.



To date, The Trust has received an incredible £335,000 of grant funding from Ulster Garden Villages which has contributed to the delivery of a wide range of our interventions, including support for our employability, education, and volunteers' programmes. In 2012 we also received a Capital grant to support the refurbishment of our new, flagship Prince's Trust Centre in Weavers Court, Belfast. Currently, Ulster Garden Villages is supporting The Prince's Trust 'Achieve' programme – a programme designed to help young people aged 13-19 develop the skills and confidence to re-engage with education and achieve their full potential. In the past



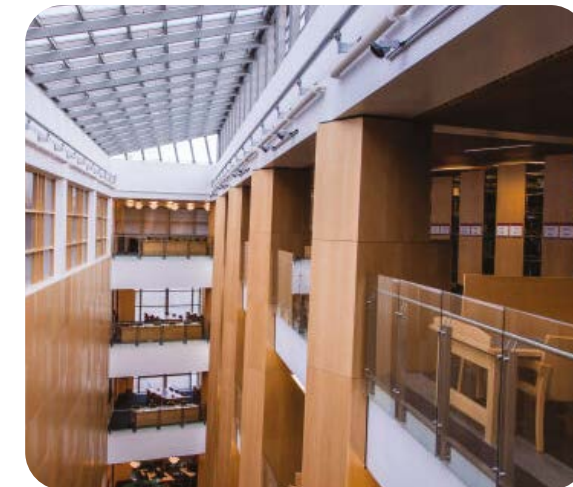
12 months Achieve has supported over 6,000 young people and helped over 83% of learners progress onto further education, training, or employment.

"I would like to take this opportunity to express my sincere thanks to Ulster Garden Villages for their long-standing support of our work in Northern Ireland. The funding from Ulster Garden Villages has made and continues to make a tangible and lasting difference to the lives of vulnerable and at-risk young people" Quote from Mark Dougan – Director, The Prince's Trust Northern Ireland

Education & Training

Queen's University, Belfast

Ulster Garden Villages has been a key partner, contributing almost £2.5m to support projects of strategic importance across the University.



"The support of Ulster Garden Villages Limited has had a transformational impact on the Queen's campus. This has helped to create an exceptional experience for our students, whilst also delivering a wider legacy for communities across Northern Ireland."

President and Vice-Chancellor,
Professor Sir Ian Greer

Queen's University continued

Over the past 20 years, philanthropy has helped to transform the campus and advance world-leading research at Queen's University Belfast. Ulster Garden Villages Limited has been a key partner, contributing almost £2.5m to support projects of strategic importance across the University.

A contribution of £1m towards the development of The McClay Library in 2002 proved to be a powerful catalyst for other significant funders, and almost £30m was secured through philanthropy, supporting this vital resource for our students. The state-of-the-art library opened in 2009 and footfall is in the region of 1.3m each year. In 2022, in recognition of the cost of living crisis and financial challenges facing students, the library extended its term-time opening hours to 24 hours during the week, ensuring students have a safe and warm place to study.

The Great Hall, a Grade A listed building, is an historic public space within the Lanyon Building, at the heart of Queen's. Over the years, the Hall was compromised by unsympathetic modifications which detracted from the architectural heritage of the building. A £2.4m restoration took place in 2001 to rectify the inappropriate changes and realise the original vision for the building. It now hosts an events and dining space, a selection of portraits from the University's art collection, and Ulster Garden Villages contribution of £100,000 supported the creation of

the Organ gallery, a typical feature of many Great Halls. This was part of the architect Charles Lanyon's original vision for the Hall, which was unable to proceed when the Hall was first built due to budgetary constraints.

A world-class Simulation Centre for healthcare professional students was established at Queen's in 2021 with support from Ulster Garden Villages. This cutting-edge simulation facility has a focus on interprofessional education, bringing together student doctors, pharmacists, nurses, midwives and dentists, to learn together, in a range of simulated healthcare settings. This includes a virtual reality simulation suite, hospital wards, acute and emergency care, and a prescribing zone. The Centre is having a transformational impact on training for healthcare practice, better preparing our students for effective and compassionate care. Over 700 healthcare students graduate from Queen's each year. Over the course of their careers, they will care for thousands of patients in Northern Ireland and beyond.



Ulster Garden Villages support of £81,000 established the "Trim Trail" in 2011, a 3km walking, jogging and cycling route through the pleasant countryside and parkland of Queen's Sport facilities in Upper Malone. The trail has proved hugely popular with students and local communities and a partnership was established with Park Run in 2012. This has ensured the trail is open and accessible to the public and that communities can benefit from keeping fit and active in the outdoors. Since then,

there have been 55,763 individual runs completed by 8,736 different park runners at this site, and there is an average of 109 participants in the run each week.

Ulster Garden Villages has also made a significant contribution of over £1.1m to pioneering medical and health research in Queen's. This support has helped to advance research excellence and impact in Meningitis and Septicemia, cancer research and ophthalmology.

Education & Training

Belfast Activity Centre (BAC)

Belfast Activity Centre (BAC) has greatly valued the relationship forged with Ulster Garden Villages that has spanned over twenty years and has enabled a number of timely and significant development projects.



Ulster Garden Villages (UGV) has provided both the catalyst for 'pump priming' development projects, assisting BAC to secure additional match funding, and essential match funding that has 'locked-in' other capital funding and investors. This has enabled BAC to proceed with a number of safety and operational upgrades for underpinning future capacity expansions. Total funding of £165,000 has been awarded.

BAC recognises the knowledge, interest and non-intrusive support that UGV has consistently shown as a grant making stakeholder, with a willingness to act as a critical friend towards BAC in ways that demonstrates a genuine commitment towards 'partnership'.



This has been a relationship that celebrates in our successes but also provides practical support and comfort during other times of stress and challenge, sharing our vision towards 'changing lives' and 'building futures' for children and young people from across Northern Ireland.

The impact of UGV funding underpins a shared ownership towards creating generational legacies of building young lives at the most critical times during their personal life experiences; by supporting the necessary infrastructure and resources that liberates BAC to focus upon engaging with the greatest number of young people through outdoor adventure learning, vocational and accredited skills training and informal education.

Belfast Activity Centre continued

Examples of the impact of Ulster Garden Villages support includes investing in the expansion of the Belfast Adventure Learning Park located within Barnett Demesne in South Belfast and supporting the rescue, restoration and regeneration of Ardaluin House, located in Newcastle, Co. Down.

UGV shares BAC's vision of 'Adventure at the Heart of the City' for children and young people, many of whom reflect and experience acute social, economic and educational disadvantages. Through providing an equality of access and opportunity for all young people including those with physical and mental disabilities and our growing communities of young people from ethnic and minority communities, UGV has enabled BAC to increase its capacity from around 10,000 to over 20,000 young people annually.

For many of these young people, the Belfast Adventure Park provides an opportunity to try new experiences, learn new skills and to attain new learning outside the classroom accredited qualifications. Most importantly, this equality of opportunity enables their glass ceiling for personal expectation and ambition to be shattered. It provides young people with the personal confidence, self-esteem and self-belief to truly believe in themselves, to trust in others and to strive towards realising their full potential.

UGV has provided an essential funding catalyst to help promote a shared confidence across a wider constituency of prospective grant funders and stakeholders. This has included supporting a funding

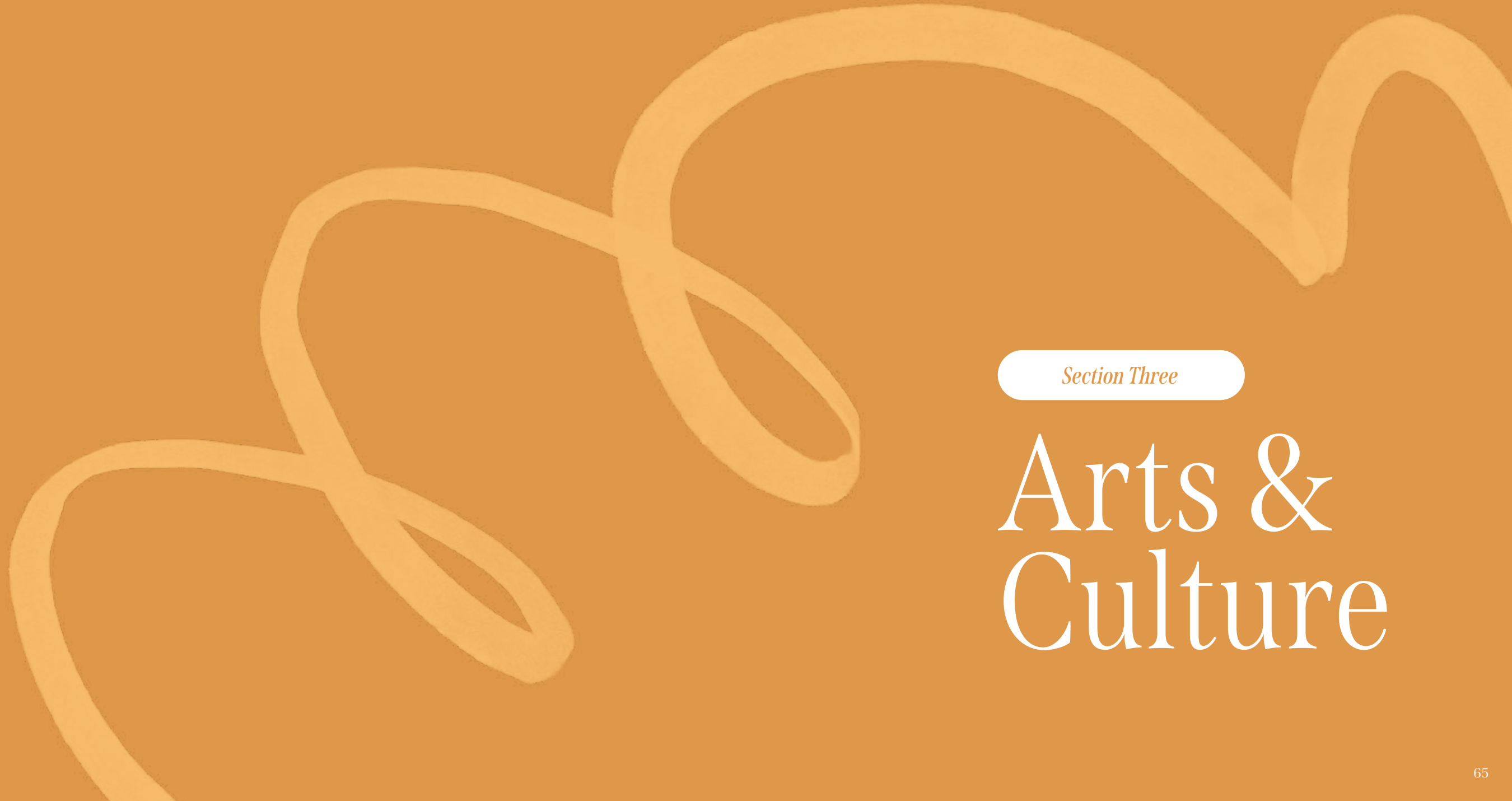
consortium to help rescue, restore and regenerate Ardaluin House for the continuing benefit of the wider voluntary and community sectors throughout Northern Ireland.

At risk of closure, BAC put forward a strategy to rescue Ardaluin, which had a long history of providing residential respite for thousands of young people from the difficult and challenging times and experiences of the 1970's through to 2010. Ardaluin House today continues to provide residential and camping experiences for almost 2,000 young people annually. Opportunities that for very many young people provides their first away from home and community experience described frequently as life changing and life memorable.

These experiences give an opportunity for many children to experience their first steps towards greater independence, self-sufficiency and increased resilience but within a safe and shared space that encourages personal and social development and growth through pushing the boundaries for individual experiences and learning.

BAC remains indebted to Ulster Garden Villages for their support towards BAC over very many years, demonstrating the courage to take shared risks to enable young people to realise their full potential. Recognising as we do, that the greatest legacy rests not with the building bricks per se, but through providing the building blocks for today and future generations of young people.





Section Three

Arts & Culture

Arts & Culture

Ulster Orchestra

Ulster Garden Villages has provided funding of £402,500 to support the work of the Orchestra and we look forward to continuing this work with our latest grant offer toward their capital refurbishment project and community outreach work.



The positive impact funding from Ulster Garden Villages (UGV) has had on the Ulster Orchestra is unequivocal and impossible to exaggerate. Quite simply UGV have been fundamental to the growth of the Ulster Orchestra offering support during some of the most difficult times in our history. Specifically, supporting us to build a crucial new element to our work by stepping in as the founders of our 'Learning and Creative Engagement' programme and giving us the funding to build our core strength. More recently supporting us in our efforts to create a home for the orchestra in the heart of the community.

The Ulster Orchestra was founded in 1966 and is one of the most influential arts organisations in Northern Ireland but the last ten years have been particularly challenging for culture across the UK and the Ulster Orchestra has experienced some difficult days in particular. A period of financial instability followed by the pressures of the Covid pandemic could have

floored the Orchestra but with determination and vision from our most loyal funders, not least Ulster Garden Villages, we were able to grow out of adversity. The Ulster Orchestra is back at the top of its craft performing over 70 concerts per season in Belfast and across NI, plus access programmes such as Relaxed Performances involving the full orchestra and designed for people living with autism and dementia and Tea Dances supporting initiatives to tackle isolation and loneliness.

Since 2016 and with the support of UGV the Ulster Orchestra created a new contract for all musicians which incorporates the delivery of Learning and Community Engagement work in schools and community settings alongside world class concert performances – the Ulster Orchestra is the only symphony orchestra in the UK to work this way. We now forge partnerships and connections with all communities at all stages of their musical journey in a sustainable cost-effective manner.

"At one point the very survival of the Ulster Orchestra was only made possible through the financial support we received from Ulster Garden Villages. Undoubtedly, the decision of the UGV trustees to support the orchestra through some of our darkest days gave us the confidence to fight and strive for a better future." - Auveen Sands CEO Ulster Orchestra

Learning and Community Engagement (Music Room)

The Ulster Orchestra LCE team prioritise schools in areas of multiple deprivation and particularly those with limited musical provision. As a result of UGV funding thousands of these children experienced their first live orchestral music concerts in the last 7 years. The schools in particular that have benefited from this experience are Malvern PS, Good Shepherd PS and Wheatfield PS. Since 2016 p5 pupils from all 3 schools have performed on the Ulster Hall Stage with the full orchestra in front of their parents/carers, siblings and fellow pupils.

"Performing with the Ulster Orchestra on the famous Ulster Hall Stage can be genuinely life changing for the children involved. Generating aspiration and ambition and a sense that 'anything is possible'. Driving confidence and self-worth and equipping young people with a whole new sense of opportunity." - Chairman Ulster Orchestra

The support from Ulster Garden Villages has had a major impact on the increased resilience, aspirations and emotional development for those children who experience social and economic disadvantage.

"I believe hearing the Ulster Orchestra in a concert like this which is designed for a young audience will encourage the children to want to continue learning their instruments and to practice more so that one day they can be as good as the orchestra players. This was a wonderful experience for our pupils and thank you for inviting us." - Primary School Teachers

The Future Vision

In mid-2022 the Ulster Orchestra moved its home and office from central Belfast to the schoolhouse at Townsend Street Church and soon after began to rehearse in the main church building. The Ulster Orchestra's performance home is the wonderful Ulster Hall but is not owned or managed by the orchestra. Townsend Street Church presents a wonderful opportunity for the Ulster Orchestra and has the potential to be the organisation's first real home. With much encouragement and support from Valerie Ingram and the UGV Trustees the Ulster Orchestra applied for and received a pledge to support the costs to purchase and regenerate Townsend Street Church including acoustic treatments and staffing. This early help and confidence in the project helped to raise the profile of the project which in turn has attracted other private and public support.

The confidence UGV have shown at key turning points for the Ulster Orchestra has been transformational and the help and advice at every step has been invaluable. The impact UGV has had on the Ulster Orchestra has been simply transformational.



Arts & Culture

Youth Action NI

Ulster Garden Villages has provided funding of £150,000 to Youth Action in support of their valuable youth work and performing arts provision for local young people.





Youth Action Northern Ireland, was established in 1944, and is a youth work and arts charity working with young people ages 10-25 to tackle inequalities in their lives, improve their life chances and inspire them. Youth Action particularly targets young people who are disadvantaged or excluded/isolated and gives them affordable access to performing arts.

Ulster Garden Villages has been partners of Youth Action over many years and helped with the acquisition of their current premises which contains our Headquarters, Youth Centre and theatre space.

Since then UGV has supported our Rainbow School of performing Arts, which continues to be our largest, most exciting and innovative part-time performing arts project. The Rainbow Factory is the cornerstone of our Youth Arts programme and now in its 20th year, it continues to grow. We currently run 22 weekly classes in dance, drama, technical theatre and drumming and have over 400 young people attending in Belfast and Ballymena each week.



Ulster Garden Villages also supported our Suitcase Theatre with an original piece designed for performing arts and which was delivered in schools and community settings across Belfast. When our young people were isolated due to the pandemic, Ulster Garden Villages reached out with a grant to help to keep our members connected and involved in a full ranges of experiences.



Members are supported to reach their full potential, personally, artistically and socially and Ulster Garden Villages has helped us grow and given our members the opportunity to develop their individual skills, not only as performers but for many as facilitators, producers and peer educators.

- Maire Campbell, Artistic Director,
Youth Action Northern Ireland

Arts & Culture

Theatre & Arts Spaces



The Lyric Theatre

In 2004, Ulster Garden Villages provided a grant offer of £400,000 to help create a new signature theatre building on the banks of the River Lagan. Built in a stunning blend of Belfast brick, arts and steel, the facilities include a large 400 seat auditorium, a studio theatre for youth, community and education activities, full access for people with disabilities and a riverside bar and café overlooking the river.

In 2011, the Lyric Theatre opened its doors and in the words of Liam Neeson OBE, "opened up a whole new realm of creative possibilities for future generations of young people in Northern Ireland"

The beating cultural heart of Northern Ireland for almost 75 years, the Lyric Theatre is the home of world-class theatre, nurturing talent and inspiring the next generation of theatre makers and audiences.

Since 1951, this special place has been a springboard for internationally acclaimed playwrights, poets, directors and actors, the Lyric is the place where Liam Neeson famously learnt his craft and showcases talent across the world.

As Northern Ireland's only full-time theatre to produce its own productions from page to stage, they care deeply about maintaining a high-quality and inclusive programme that captures the imaginations of our audiences. The Lyric was named the UK's Theatre of the Year 2023 in recognition of the massive impact they make off our stages, supporting hundreds of writers to develop their work; directly engaging with tens of thousands of children and young people every year in communities and schools; creating pathways to employment; and nurturing and training young actors through their Drama Studio.

Theatre & Arts Spaces continued

The MAC

In 2008, Ulster Garden Villages provided support of £400,000 toward a new purpose-built arts centre in the Cathedral Quarter of Belfast.

The MAC's origins lie in the Old Museum Arts Centre (OMAC) which was a cultural space, bringing ground-breaking theatre, dance, music, visual art, literature and education to all ages. The MAC is a communal and democratic space which is six storeys high and includes two theatres, three visual arts galleries, a dance studio, education, workshop and rehearsal spaces. Since opening in 2012, the MAC has worked in partnership with many of Northern Ireland's leading voluntary and community-based organisations and local schools.

Anne McReynolds CEO, The MAC, "The impact of Ulster Garden Villages support for the MAC over many years cannot be overestimated. From the earliest possible stage of the organisation's life, the Trustees have generously provided their capital and revenue financial support as well as their wisdom and guidance.

Creating a new, landmark cultural asset for Northern Ireland came with a few challenges and having the imprimatur of Ulster Garden Villages' very early backing helped unlock other significant capital funds. As a locally based, open and responsive funder Ulster Garden Villages has been amongst the MAC's most valued cheerleaders."



The Old Church, Cushendun

The village of Cushendun in the Glens of Antrim is home to the Old Church Centre, a unique space dedicated to heritage, arts, and community. Nestled in an area of outstanding natural beauty, the Centre offers a busy schedule of events, classes, and workshops throughout the year, and welcomes visitors most weekends.

Live music, Cushendun Community Cinema, quarterly craft fairs, and The Big Arts Weekend festival are some of the regular events hosted at the Centre, which has also welcomed esteemed NI arts organisations such as the Ulster Orchestra and Big Telly theatre company. The Centre is available for hire for weddings, corporate, and community events.

Managed by Cushendun Building Preservation Trust, a cross-community volunteer group, the Old Church Centre was restored in 2019 and Ulster Garden Villages provided £40,000 which along with the generous support of the National Lottery Heritage Fund, Causeway Coast and Glens Borough Council, helped to preserve the building's historic value and breathe new life into it as a focal point for the village.



Bangor Drama Club, The Studio Theatre, Hamilton Road, Bangor

Ulster Garden Villages provided a grant of £150,000 to purchase the Good Templar Hall, Bangor. Bangor Drama Club needed to move from its very constrained premises and to build on their many years of drama experience. Founded in 1935, Bangor Drama Club provides a wide variety of drama including local festivals and youth-based drama.

The Drama Club identified a property-The Good Templar Hall at Hamilton Road, Bangor and began their journey to create a multi-purpose theatre facility in the centre of Bangor.

In April 2017, the renovated building opened as the Studio 1A Theatre, and the once derelict building was brought back to life as a vibrant drama production community space. Figures show that there are now 500 performers and over 4,000 audience members using and attending the theatre each year, and that figure is growing fast.



Capital Projects

Theatres & Arts Venues

Bangor Drama Club

- The Studio 1A Theatre, Bangor-£160,000

Belfast Buildings Trust

- Carlisle Memorial Church-£250,000

Circusful (Belfast Circus School)

- Refurbishment of building, Belfast-£15,000

Echo Echo Theatre Dance Company

- Centre for Creative Movement, Derry/Londonderry-Dance Studio-£20,000

Crescent Arts Centre

- Building works, Belfast -£15,000

Cushendun Buildings Preservation Trust

- The Old Church, Cushendun -Arts Centre & Community Hub-£40,000

Friends of Portaferry

- Presbyterian Church Arts Venue-£25,000

Grand Opera House, Belfast

- Restoration and building project-£300,000

The Linenhall Library

- Heritage restoration and access £153,346



The Lyric Theatre

- Development of New Theatre building, Belfast-£406,757

The MAC

- New Theatre and Arts Venue, Belfast -£430,000

The Oh Yeah Music Centre

- Refurbishment of Building, Belfast-£15,000

Queen Street Studios

- QSS Studios and Gallery-£5,000

Seacourt Print Workshop

- Adaptions to building, Bangor-£25,000

North West Play Resource Centre

- The redevelopment of the Playhouse, Derry-£20,000

Rathfriland & District

Regeneration Group

- The Old Chandler's House, Rathfriland-Arts Venue & Community Hub-£100,000





Section Four

Heritage & Environment

Heritage & Environment

Woodland Trust

Ulster Garden Villages was delighted to have provided funding support of £450,000 to the Woodland Trust to reclaim a further vital piece of land connecting two areas of important ancient woodland. The anticipated planting of thousands of new native trees on this land is an exciting opportunity to both expand and restore the health of the woodland, guaranteeing its future to be enjoyed by many generations to come both for the local community and visitors alike.



The Woodland Trust is the UK's largest conservation charity, our vision is a world where woods and trees thrive for people and nature. Across the UK we care for over 1000 woodlands, 50 of which are in Northern Ireland.

In 2021 the Woodland Trust Northern Ireland had the unique opportunity to purchase Mourne Park – one of the most important areas of ancient and semi natural woodland in Northern Ireland, a special site for restoration and conservation. The decision to bring Mourne Park into the Trust's care received unanimous support from our Board of Trustees, partners, funders and the public.

Due to the scale of the financial investment the decision was made to acquire the land in 2 tranches. The first tranche in 2021 included over 100 hectares of precious ancient and semi natural woodland, parkland, Knockree Hill, car park and even a golf driving range!

Work commenced soon after to restore the woodlands and create three new walking trails, and on 1 August 2022, the Woodland Trust opened 156ha of Mourne Park for the first time in 500 years. Since then, we have welcomed over 100,000 visitors and the Trust, in consultation with the local community, is planning the next phase of investment in Mourne Park.

The second tranche of the acquisition, in May 2023, enabled the Woodland Trust to extend our ownership in Mourne Park by a further 32 hectares of neighbouring land. Purchasing this land was critical as it enables the Trust to buffer a stretch of vital ancient woodland by planting thousands of native trees. The additional trees will cushion part of the boundary of Mourne Park and extend vital habitats for nature, creating ancient woodlands of the future.

The investment by Ulster Garden Villages as lead funder for the second tranche was critical. Their investment enabled the Trust to approach Northern Ireland Environment Agency, donors and the public with confidence, ultimately, unlocking the match funding required to purchase the additional 32 hectares of land. Planting of native trees will begin in 2024/25, expanding, connecting, securing and ensuring the long term future of this special and unique landscape for generations to come.

“We are very much in the early days of our journey in Mourne Park. Ulster Garden Villages have secured the long term future of the woodlands at Mourne Park for which we are immensely grateful. Ancient woodland is one of the most biodiverse habitats known. However, it only covers 0.04% of Northern Ireland's land area and most of it is not in good condition. Therefore it is vital that ancient woodlands, such as those at Mourne Park, are protected and restored. The support from Ulster Garden Villages will provide a legacy for generations to come. “

- Ian McCurley, Woodland Trust
Northern Ireland Director



Heritage & Environment

Lagan Gateway

Over 20 years ago, Ulster Garden Villages offered challenge funding of £1million to Belfast City Council to ‘open up the River Lagan for all’.



Lagan Gateway continued

Over 20 years ago, Ulster Garden Villages offered challenge funding of £1 million to Belfast City Council to 'open up the River Lagan for all'. We were delighted when the new and eagerly anticipated Lagan Gateway pedestrian and cycle bridge opened in August 2021. This is an example of how our partnership and collaborative approach has helped to leverage major investment and ensure our natural resources are accessible and available to all.

Belfast City Council

The 83-metre-long bridge is one of the key elements to the £5.2 million Lagan Gateway project and in its first couple of weeks over 10,000 crossings were registered. The scheme also saw the existing Stranmillis Weir refurbished, and a new navigation lock installed to give boats better access to this part of the river. Belfast City Council invested £2.15 million in the project, while other partners including Ulster Garden Villages, the Department for Communities, the Department for Infrastructure and Lagan Navigation Trust provided the balance of funding. The Lagan Towpath is extremely popular, and the new bridge has helped to significantly reduce congestion and access by opening up the other side of the river. As well as improving connections between communities in south Belfast, we believe that the bridge and wider improvements to the area will encourage more people to explore this part of the city on foot and by bike, boosting the local economy in the longer term.

This investment in the Lagan Gateway supports many of the ambitions of the Belfast Agenda, the city's community plan. We want to regenerate our neighbourhoods, encourage more people to walk and cycle and, in turn, improve people's health and wellbeing. By improving connections between the city's built and natural environments we will contribute to all these aims, so this project is an important milestone, and the Council is grateful for the support of UGV and the other partner funders. Ulster Garden Villages supported the early intervention and came to the table at the development stage of the project and that helped to encourage other funders to contribute.



Heritage & Environment

Gobbins Path

Ulster Garden Villages provided funding support of £200,000 to Mid & East Antrim Borough Council that enabled the early stages of the project and enabled Council to secure further funding to restore this iconic and beautiful resource as a world class tourist attraction.



Gobbins Path continued

The Gobbins Coastal and Cliff Path, Islandmagee was originally built in 1902, was reimagined and re-opened to visitors in 2016. The Gobbins is a spectacular coastal walk, along the cliff edge of Northern Ireland, through tunnels and hidden caves. Ulster Garden Villages provided funding of £200,000 that supported the early stages of the project and enabled Council to secure further funding to restore this iconic and beautiful resource as a world class tourist attraction.

The project cost £7.5 million with just under half of the funding coming through the European Union's Interreg IVA Programme, managed by the Special EU Programmes Body (SEUPB) and administered by the North East Partnership. Mid and East Antrim Borough Council provided £4 million support.

The Mayor of Mid and East Antrim Borough Council, Alderman Gerardine Mulvenna, emphasised the benefit of the funding from Ulster Garden Villages,

"The early investment of funding from Ulster Garden Villages has helped shape The Gobbins to be the thriving tourist attraction it is today and has brought many economic benefits to the local economy."

The development of The Gobbins consisted of a series of 15 new bridges and six new gallery structures (which hug the side of the cliff) which were constructed and installed during 2014–15. The reimagined path includes an iconic new Tubular Bridge.

The project is a triumph of Victorian Engineering and has greatly improved the tourist offering by offering a key anchor point at the southern end of the Causeway Coastal Route. The project has increased economic activity in the local area, with spin off benefits for local services and facilities including hospitality, accommodation and other local tourism attractions. The Gobbins is now on the itinerary for many international tour operators with 80% coming from outside of Northern Ireland.



Heritage & Environment

Hearth

Ulster Garden Villages has supported Hearth with loans of £760,000 and funding of £45,000 in support of their heritage restoration projects.



Any charity that is raising funds for a new project knows that the most difficult contribution to raise is the first one, whether it is the first project by a new charity or the even the first to a new project by a well-established body.

Our experience in nearly thirty years of applying to Ulster Garden Villages for help is that they have been willing to provide that first instalment, whether it has been a loan or a grant, and it has made it possible to go to other funders to seek match funding, or even to initiate urgent work while preparing further applications.

Many charities have a geographical remit that excludes Northern Ireland or have a very specific strategy that does not fit with a project. For charities based in Northern Ireland, Ulster Garden Villages is local and very approachable, and it operates a wide remit across health, arts and environmental concerns so that a great many charities here list Ulster Garden Villages among their donors and supporters.

Hearth continued

Marcus Patton Committee Member, Hearth -

"Our first application to UGV was for loan finance to help us restore a group of derelict 18th and 19th century buildings in Armagh which lay largely roofless and very forlorn in 1990. Thanks to a loan from UGV we had working capital to enable us to restore the houses and by selling them on to new owners we were able to recoup our costs and repay the loan.

Ulster Garden Villages made a substantial contribution to our capital fund which has enabled us to restore many small buildings where the eventual surplus was modest or occasionally non-existent, and they have also backed us on potential projects that did not go ahead. However, when larger or more difficult projects have needed grants as well as loans UGV have always been sympathetic and sometimes provided financial assistance in both forms. That made possible the restoration of the severely derelict Sion Mills Stables, which now provide a home for the local community group as well as reinstating an essential component of the streetscape of that historic village.

Our current project to restore the extraordinary Riddel's Warehouse has only been made possible thanks to a loan from UGV that enabled us to buy the building at auction. We hope that when restored its new life as a hub for the arts will respond to many of the objectives of Ulster Garden Villages – contributing to the environment, the arts and the well-being of Belfast citizens."





Section Five

Community

Community

Habitat for Humanity

Grant support of £222,733 has been given to support the work of Habitat for Humanity and its army of volunteers.



Community

Grant support of £222,733 has been given to support the work of Habitat for Humanity and its army of volunteers.

Habitat for Humanity began its work in Ireland 30 years ago. A journey founded on the conviction that everyone, everywhere should have a safe place to live. Their work provided an opportunity for reconciliation; with the belief that building together could break down barriers within and between communities.

Homes, Communities, Hope

When nobody in Ireland had heard of Habitat for Humanity, Ulster Garden Villages provided the matching grant, with Habitat for Humanity International to enable its first local building project in Iris Mews, just off the Falls Road, Belfast.

Ulster Garden Villages support, through grants and loans, enabled Habitat to deliver affordable home ownership in communities impacted by deprivation and the legacy of conflict; in Glencairn, Ballysillan, Ligoniel and Downpatrick. That commitment delivered more than housing, helping build community cohesion and bringing together thousands of volunteers; building bridges delivering programmes which tackle difference – building homes, building communities, and building hope.

Habitat for Humanity continued



Change Makers Programme

"Young people should be at the forefront of global change and innovation. Empowered they can be key agents for development and peace."
Kofi Annan 1938 – 2018 Former UN Secretary General, Former Chair of the Elders.

Habitat is thankful that Ulster Garden Villages recognised the importance of engaging young people in shaping our future locally. In a context where only 8% of children in Northern Ireland attend integrated education, the Change Maker programme provides a unique opportunity for pupils from diverse backgrounds to learn together.

With Ulster Garden Villages' support Habitat was able to further develop its cross-community education programme which over three years engaged more than 600 young people from schools across Northern Ireland. The 3-day programme brings together two different schools and uses experiential learning, including interactive workshops and practical volunteering challenging young people to grow into active citizens who can make a real difference in our own community and around the world.

ReStore Volunteering Programme

In 2015 UGV committed to support Habitat ReStore's volunteer programme which enabled measurable impact in the lives of people of all ages, backgrounds, and abilities over 3 years. During the period there were 2,000 volunteer hours every month.

Habitat ReStore is now a hub for Habitat's work locally, creating local employment, directly tackling poverty by helping thousands of families improve their homes at low cost, providing employability and training support for people of all ages, backgrounds, and abilities and at the same time diverting tons of material from landfill helping to protect the environment.

With support from Ulster Garden Villages, Habitat was able to deepen the impact of the volunteer programme in ReStore; ensuring support for retired people; helping them find purpose and providing opportunities for those with offending histories, mental health challenges, brain injury and other vulnerable groups.

Retired volunteer - "It's hard to describe the impact of volunteering in ReStore, it gives me the opportunity to support volunteers with additional needs and as we work together to serve local people something profound happens."

Jenny Williams, Chief Executive, Habitat said, "Ulster Garden Villages is more than a funder, we see them as a partner who has walked with us on a journey for 30 years; leaving a legacy in the lives of the families we have served through housing, in hundreds of young people who have participated in volunteering programmes and through ReStore enabling capacity to deepen the impact of our support for volunteers as well as in the wider community. We are deeply grateful."

Community

East Belfast Mission

Over the last twenty years, Ulster Garden Villages has funded the work of the East Belfast Mission and many of its partner initiatives. Hosford is the homeless service of East Belfast Mission based in the Skainos Centre on the Lower Newtownards Road in East Belfast and for over 20 years Hosford has provided services to people who are homeless or at risk of homelessness. Street Soccer NI is a partner organisation of the East Belfast Mission.



East Belfast Mission is a charity which provides a wide variety of services which work towards the regeneration of the deprived area of East Belfast. Their work is located at a number of sites located on the lower Newtownards Road. These include the Skainos project which is an urban village development which houses a range of charities and services along with a community hub, support services and a large hostel for those living chaotic lifestyles and who are homeless and in need of high levels of support.

Ulster Garden Villages has offered funding of £100,000 for the 'Hosford Community Homes' project which aims to redevelop 240 Newtownards Road, Belfast. This property is owned by EBM and was primarily an empty building. The building will contain 6 private apartments and a community relations space for those who are ready to take the next step and leave the Mission's Homelessness Hostel or for those affected by homelessness for whom moving into a Hostel would be detrimental to their lives and progress into independence. The project will focus on those individuals who can't access private rental properties, due to financial barriers and the lack of a guarantor. Clients will



be able to benefit from increased independence whilst also being connected to the services and support from Hosford Homelessness Services. The accommodation involves short-term leases, (typically 6 months), and the residents will receive support to move into long-term accommodation and thus free a space for the next person. By enabling people to move into their own accommodation or out of the hostel more quickly, East Belfast Mission will be able to create more space in the hostel for those that need it most. This project has started a wider project of investing in housing to meet the needs of those who find themselves homeless. The project will also help to regenerate an inner-city area of dereliction. A further £22,000 was donated for the East Belfast Mission's "Ending Destitution" project. The levels of destitution are increasing and that means that members of a household are unable to meet their most basic needs (heating, eating, keeping warm, turning on the lights and maintaining a basic level of hygiene). This project aims to support women who are facing homelessness and destitution and to help them to rebuild their lives again.

East Belfast Mission continued

Skainos Square

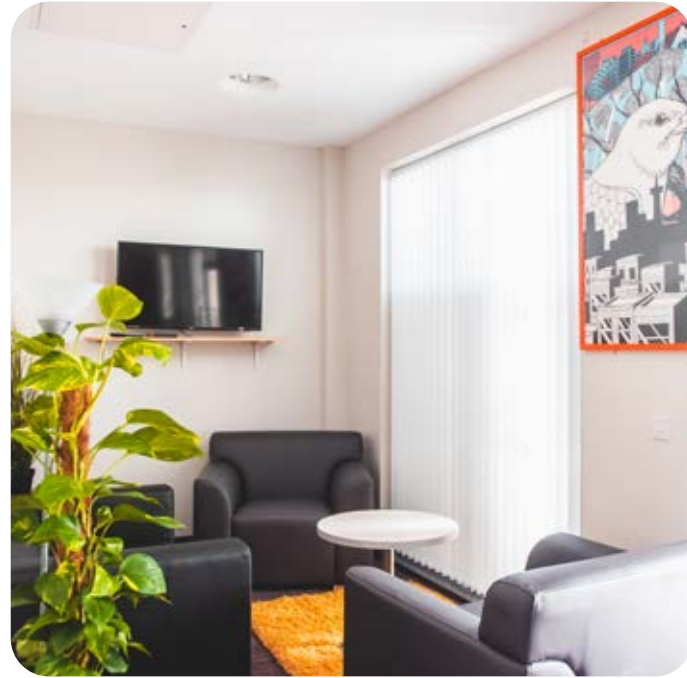
Skainos is an urban regeneration development in inner East Belfast providing share space for community transformation and renewal. Growing out of the work of the East Belfast Mission (EBM) it brings together a range of family work, community development and peace building as well as a range of partners who share the space.

A donation of £120,000 was provided to support the community work of Skainos, the East Belfast Mission and its partners including the provision of homelessness services, employability initiatives, social enterprises, social economy projects, youth work and help for the aged or disadvantaged.

Street Soccer NI

Street Soccer NI is a charity set up for disadvantaged groups of society such as the homeless, people with addictions, mental health issues, ex-prisoners, refugees, asylum seekers and people who are long term unemployed. Their aim is to bring positive change to people's lives using football. Street Soccer NI run weekly sessions in Belfast, Coleraine, Derry/Londonderry, Bangor and Downpatrick including women's football and learning disability football. Over 200 people take part in sessions every week which last between 1-2 hours. Alongside the football they offer wrap around support with housing, employment, education, addictions, mental health issues and more.

Funding of £19,000 has been provided to date for Street Soccer NI.



"Over the past 20 years Ulster Garden Villages has provided invaluable support across a range of our projects helping to deliver community development and to tackle homelessness. The impact of this support cannot be overstated; it has facilitated the development of capital and community development projects and through it we have been able to transform the lives of hundreds of people."

- Aidan Byrne, Homeless Services Manager EBM

Building Communities

Investing in the future



Building Communities continued

Ulster Garden Villages was founded over 77 years ago to fulfil an ambition to provide affordable housing in a healthy garden and community environment. By March 1950 Northern Ireland's first 'Garden Village' with 450 houses, flats and shops had been created. These, along with a Community Centre, theatre and extensive gardens in Merville Garden Village created a sense of togetherness and involvement, rather than simply providing houses for those who needed accommodation. Other developments followed at Abbots Cross, Fernagh in Whiteabbey and at new Garden Villages in Muckamore and Whitehead.

Although some of the properties have been sold, Ulster Garden Villages retains a major rental property portfolio and continues to manage developments on their own and other's behalf. Given the age of its older properties, Ulster Garden Villages has continued to invest substantially in refurbishments. Major works at Merville Garden Village, located in a conservation area in Newtownabbey and works at Abbots Cross, Newtownabbey are in the final stages.

Merville once again in 2022 won the 'Northern Ireland Amenity Council's Best Kept Housing Award' and the judges praised the well-maintained open spaces and the centrally located treelined walkways where new young trees have recently planted. The residents were highly praised for their pride in the place they live, as there was an absence of litter and graffiti, and many had shown initiative with attractive planting and floral enhancements at the front of their properties.



Building Communities continued

The Banks, Groomsport Road, Bangor



The Charity continues to actively review opportunities to grow and the latest of these developments is 'The Banks', Groomsport Road, Bangor which consists of 30 apartments with stunning sea views. 'The Banks' is already a flourishing and vibrant community designed specifically for the over 55s.

The revenue generated from housing allows Ulster Garden Villages to ensure that older buildings remain in good repair, with the surplus used to provide grant aid to charities in Northern Ireland. This, coupled with our investment portfolio income allows us to transfer funds across to our Common Fund each year. As the income used to fund Ulster Garden Villages is self-generated, the charity is in an advantageous position which allows us to work collaboratively with charities and other funding partners to meet the needs and opportunities emerging across Northern Ireland. The charities we work with are best placed to identify these needs and clearly demonstrate the impact for their beneficiaries.

Capital Projects

Ardaluin Regeneration Trust, Newcastle

- Restoration of Outdoor Education Centre

Belfast Activity Centre, Barnett Demesne, Shaw’s Bridge, Belfast

- Belfast Adventure Learning Park
- Essential Upgrade Programme

Belfast Arthroplasty Trust, Musgrave Park Hospital

- Orthopaedic Simulation Equipment

Belfast Central Mission

- Ballycopeland Nursing & Dementia Centre, Co Down

Belfast City Council

- Lagan Gateway Project, bridge, towpath and enabling works

Circusful

(Belfast Community Circus School)

- Essential Building Works & lighting

Belfast Health and Social Care Trust

- PET/CT Scanner for the NI Cancer Centre, Belfast City Hospital

Belfast Hills Partnership

- Belfast Hills Strategic Infrastructure Project, Divis and the Black Mountain

Ballyphilip & Ardquin Community Hall

- Essential Works

Brain Injury Matters

- Refurbishment of existing space - Arts and Wellbeing Hub and Creations Gallery

British Red Cross Association

- Purchase of Red Cross Fire & Emergency Support Vehicle

Broughshane Environment Waterfowl and Wildlife Trust

- Shelter for the park

Bryson Lagansports

- Purchase of sailing vessel

Business in the Community

- Creating a community garden, Belfast

Cairn Lodge ABC

- Essential refurbishment work.

Camphill Communities Trust

- Mourne Grange, Kilkeel, Refurbishment of Finlieve
- Clanabogan, Omagh-Replacement buildings
- Glencraig, Craigavad- Biomass Heating System

Cancer Focus NI

- Purchase of a Keeping Well vehicle

Cancer Fund for Children, Newcastle

- Narnia, Log Cabin
- Daisy Lodge Short breaks and Respite build

Cashel Community Association

- refurbishment & extension to Community Hall

Chinese Welfare Association

- Community Centre

Citizens Advice Bureau

- Essential equipment and IT upgrade, Newtownabbey
- CAB, Belfast New building

Corrymeela Community

- New purpose built volunteer house at Corrymeela, Ballycastle
- Furnishings & fittngs upgrade
- Waste water project

Croft Community

- Mayne House, Dementia Care
- Croft Lodge Respite Unit
- Finishings in new and refurbished houses
- Social barns
- Croft Memory Garden

Culmore Community, Derry

- Additional Space Project

Cushendun Buildings Preservation Trust

- Old Church Community Hub and Arts Centre

Derry Well Women

- New roof

Destined Limited

- North-West Centre for Learning Disability (NWCLD) and Railway Museum Upgrade

Discovery 80/Share, Fermanagh

- Chalet improvement
- Wood pellet boiler

Down Cathedral

- Works to Cathedral

Echo Echo Dance Theatre

- Centre for Creative Movement, Derry

Ederney Community Development Trust

- Community Centre

Federation of Women’s Institutes, Belfast

- Roof repairs

Fisherwick Presbyterian Church

- Student Outreach Centre

Forthspring Intercommunity Group

- Youth Centre renovation

The Macrory Centre

- Outreach Centre renovation and refurbishment

Foyle Hospice

- Hospice In-Patient Beds Refurbishment

Friends of Glenariffe

- Community Hub & Sports Centre

Friends of Lissan House

- Restoration of Lissan House, Cookstown

Friends of Portaferry Presbyterian Church

- Heritage & Arts Centre

Girlguiding Ulster

- Lorne House Refurbishment, Holywood

Glenarm Buildings Preservation Trust

- The Seaview Hall

Gracehill Old School Trust

- Heritage Restoration work
- Groundwork NI**
- Purchase of van

Hearth Revolving Fund

- Restoration Heritage Projects

Hillcroft School, Newtownabbey

- Play equipment and sensory room

Hollywood Old School Preservation Trust

- The Old Scout Hall, Hollywood - restoration of community space

Hostelling international NI

- Donegall Road Property
- Refurbishment of Donegall Road, Belfast

IncredABLE

- Drumbee School House Renovation

Inverbrena Community Association, Strangford

- Heating System at Inverbrena Hall

Kilcooley Allotments

- Polytunnels and materials

Kilcreggan Homes Ltd

- A Home & Skills for Life, Carrickfergus

Kinder Community House

- Renovation work and disabled premises upgrade

L’Arche Belfast

- Outdoor cabins for L’Arche Village, Knockbreda

Mid & East Antrim Borough Council (formerly Larne Council)

- The restoration of the Gobbins Path & Bridges, Islandmagee

Larne Community Care Centre

- Youth Centre

Larne Sea Cadets

- Construction of a Boat Station, Dixon Hall

Learning to Grow

- Water well project, Larne

Leonard Cheshire, Belfast

- Alcohol –related Acquired Brain Injury Unit

Lisburn & District Scout Council

- Concrete Access to Slievenaman Bothy

Love for Life

- Purchase of vehicle for schools’ project

Macmillan Cancer Support

- Purchase of premises
- Macmillan Specialist Paliative Care Units, Antrim Area Hospital

Mainstay DRP

- Downe Residential, Downpatrick

Marie Curie Hospice

- The Living Rooms Project

Maydown Community Association

- Maydown Park Garden

Mayo Peace Park

- Remembrance Garden

Men Against Cancer Foundation

- Acquisition of a ‘Sterilising Unit’ for the new Robotic Surgeon equipment

Mencap NI

- Mencap Children’s Centre, Newtownbreda project
- Golden Lane Housing Project, Bangor. (2 x houses for people with learning disabilities).

Merville House <ul style="list-style-type: none"> Renovation of Merville House, Newtownabbey 	Niamh Louise Foundation <ul style="list-style-type: none"> Purchase of a mobile vehicle 	Company Limited <ul style="list-style-type: none"> Restoration of the Old Chandler's House Community Hub and Arts Centre 	SOS Bus NI Limited <ul style="list-style-type: none"> Purchase of vehicle 	The Turnaround Project <ul style="list-style-type: none"> Purchase of van and ground maintenance equipment 	Womens Aid <ul style="list-style-type: none"> Refurbishment Projects Foyle Women's Aid Mid-Ulster Women's Aid Lisburn Women's Aid Women's Aid, Cookstown Women's Aid -A, B, C, L, N
Milford Preservation Society <ul style="list-style-type: none"> Museum collection 	Now Project <ul style="list-style-type: none"> Crawfordsburn Pottery & Café 	Rathgaele Gymnastics and Tumbling Club <ul style="list-style-type: none"> Gymnastics Equipment 	Southern Area Hospice <ul style="list-style-type: none"> Upgrading of Residential accommodation Restoration of Hospice 	The Village Garden, Broughshane <ul style="list-style-type: none"> Broughshane House redevelopment 	
MHS Heritage & Culture <ul style="list-style-type: none"> Maghera Community Hub 	NSPCC Northern Ireland <ul style="list-style-type: none"> Furnishing and equipping new NSPCC Service Centre 	Riding for the Disabled <ul style="list-style-type: none"> Coleraine and Omagh essential upgrade works 	Springfield Charitable Association <ul style="list-style-type: none"> Purchase of vehicle 	Titanic Foundation <ul style="list-style-type: none"> Saving Mew Island Optic 	
Molly & Mia Foundation <ul style="list-style-type: none"> Garden of Remembrance-Phase 2 	Old Belmont School <ul style="list-style-type: none"> Renovation and repurpose of Old Belmont School 	Resurgam Trust <ul style="list-style-type: none"> Lisburn Hub 	SS Nomadic Charitable Trust (Titanic) <ul style="list-style-type: none"> Restoring the SS Nomadic 	Tools for Solidarity <ul style="list-style-type: none"> New Building refurbishment, Sunnyside Street, Belfast Disabled access toilets, Downpatrick 	YMCA <ul style="list-style-type: none"> Refurbishment and Building Projects Greenhill YMCA Carrickfergus YMCA Londonderry YMCA Lurgan YMCA North Down YMCA
Moneydarragh Community Hub, Annalong <ul style="list-style-type: none"> Essential Improvement of facilities at Moneydarragh Hub 	Outdoor Recreation NI <ul style="list-style-type: none"> Access paths and trails at Blessingbourne, County Fermanagh 	Rosstulla Parents' Association <ul style="list-style-type: none"> Purchase of mini-bus 	St Columbs Hall, Derry <ul style="list-style-type: none"> Initial emergency building work 	Townsend Presbyterian Church Outreach <ul style="list-style-type: none"> Refurbishment of Outreach Centre 	Youth Action <ul style="list-style-type: none"> Acquisition of new premises, Belfast
Monkstown Boxing Club <ul style="list-style-type: none"> Education Outreach Centre 	Oxygen Therapy Centre, Larne <ul style="list-style-type: none"> Hyperbaric Oxygen Therapy Chamber Equipment 	Rowallane Community Hub <ul style="list-style-type: none"> Fit out of barns, stables and allotments 	The Boys Brigade <ul style="list-style-type: none"> Ganaway Games Barn, Millisle Dining & Volunteers Training facility, Ganaway BB House refurbishment, Belfast 	U3A Foyle <ul style="list-style-type: none"> Fit out and equipment costs 	Zero 8 Teen <ul style="list-style-type: none"> Ulster Garden Villages Play Area, Craigavon
Mosside Development Group <ul style="list-style-type: none"> Mosside Regeneration Programme 	Portglenone Enterprise Group <ul style="list-style-type: none"> Conversion of former Northern Bank to Community Hub 	RSPB NI <ul style="list-style-type: none"> Purchase of premises at Rathlin Island, Volunteer base 	The Bushmills Trust <ul style="list-style-type: none"> Improvements to village 	Ulster Historical Foundation <ul style="list-style-type: none"> Purchase of equipment & furniture 	
National Autistic Society <ul style="list-style-type: none"> The Autism Centre, Carryduff 	Parents and Friends Association -Donkey Sanctuary <ul style="list-style-type: none"> Riding Trails for the disabled and Sensory Garden, Templepatrick 	Sailortown Regeneration Group <ul style="list-style-type: none"> Former St Joseph's Church, Belfast, Essential Roof repairs 	The Cedar Foundation <ul style="list-style-type: none"> Ardkeen refurbishment, Belfast Minibus for Twisel Lodge, Holywood North West Regional Resource Centre 	Union Theological College <ul style="list-style-type: none"> Heritage and conservation refurbishment 	
National Museums Northern Ireland <ul style="list-style-type: none"> Hall of Wonders, Ulster Museum, Belfast 	Portrush Sea Cadets <ul style="list-style-type: none"> Purchase of equipment 	Seacourt Print Workshops <ul style="list-style-type: none"> Capital works to premises 	The Courthouse, Kesh <ul style="list-style-type: none"> Fit out Kesh village 	Vineyard Compassion, Coleraine <ul style="list-style-type: none"> New Build Compassion Centre Coleraine; 2021 Purchase of a telescopic handler for the Link logs initiative 	
National Trust <ul style="list-style-type: none"> Rediscovering the magic of Mount Stewart and providing Access into Mount Stewart Demesne 	Positive Life <ul style="list-style-type: none"> Move to and conversion of new premises, Belfast 	South East Regional College <ul style="list-style-type: none"> Polytunnels and equipment -Horticulture project, Holywood 	The Disabled Drivers Association <ul style="list-style-type: none"> Disabled access entrance 	Voice of Young People in Care/Include Youth <ul style="list-style-type: none"> Refurbishment of Youth Centre, Belfast 	
Neillsbrook Community Development Group <ul style="list-style-type: none"> Clock Tower 	Queen's University of Belfast <ul style="list-style-type: none"> New Library at Queen's University, Belfast Trim Trails at The Dub, Belfast Simulation Centre 	Shopmobility Belfast <ul style="list-style-type: none"> Equipment and capital build -Belfast Hospital Project 	The Follies Trust <ul style="list-style-type: none"> Conservation of the Cunninham Mausoleum, Knockbreda 	Wesley Trust Methodist Church (Outreach) <ul style="list-style-type: none"> New Community Hub, Lurgan 	
Newtownabbey Borough Council (now Antrim & Newtownabbey Borough Council) <ul style="list-style-type: none"> Public Artwork-Mossley Mill 	Railway Preservation Society of Ireland <ul style="list-style-type: none"> The Whitehead Visitor Centre 	Simon Community <ul style="list-style-type: none"> Kit out of Edward Street Temporary Accommodation Project, Portadown 	The Scout Association NI Scout Council <ul style="list-style-type: none"> Refurbishment Cedar Lodge, Crawfordsburn 	Whitehouse Preservation Society <ul style="list-style-type: none"> Restoration of heritage building-The White House, Newtownabbey 	
NI Children's Hospice <ul style="list-style-type: none"> Upgrade and refurbishment at Horizon House, Newtownabbey 	Rathfriland District & Regeneration	Sion Mills Building Preservation Trust <ul style="list-style-type: none"> Restoration and fit out -Sion Mills Stables 	The Somme Nursing Home <ul style="list-style-type: none"> Extension and Upgrade of Facilities 		

Donations 2003-2022

	£		£		£		£
Abaana	450	Belfast Cathedral	12,000	Carrickfergus Women's Forum	10,000	Cuan Mhuire (ND) Ltd	2,000
Abbeyfield Lisburn Society	2,500	Belfast Central Mission	255,000	Cashel Community Association	20,000	Culmore Community	12,000
ABF - The Soldiers' Charity	29,000	Belfast Charitable Association	61,600	Castleward Opera	44,500	Cunningham's Lane Community Residents' Association	2,280
Acceptable Enterprises (Larne) Ltd	12,000	Belfast Circus School	15,000	Cathedral Youth Club	5,000	Cushendun Building Preservation Trust	40,000
ACET in Ireland	30,000	Belfast City Council	1,000,000	Causeway & Mid Ulster Women's Aid	5,000	Cystic Fibrosis	11,500
Action Cancer	417,000	Belfast Community Circus School	30,000	Changing Faces	5,000	Deaf Association of NI	9,000
Action for Children	10,000	Belfast Hills Partnership	20,000	Charis Integrated Cancer Care	2,500	DEC (Disaster Emergency Committee)	17,000
Action Mental Health	125,000	Belfast Lough Sailability	1,250	Charles Sheils Housing	4,024	Derry El Salvador Committee	5,000
Action on Elder Abuse	4,000	Belfast Operatic Society	2,200	Charles Wood Summer School	3,000	Derry Well Women	1,000
Action on Hearing Loss	10,000	Belfast Titanic Company	5,000	Cheers Youth Centre	10,000	Destined	60,000
ADD-NI Children's Charity	24,590	Benbradagh Community Support	5,500	Chelsea Pensioners' Appeal	5,000	Disability Action	100,000
Advantage NI Ltd	10,000	Belfast Health and Social Care Trust	1,782,517	Childnet International	15,000	Disability Sports NI	18,893
Adventure Leadership Training	1,500	Book of Honour	20,000	Children & Parents & Autism	2,000	Disabled Christian Fellowship	6,000
AGE NI	25,000	Boys & Girls Clubs NI	42,000	Chinese Welfare Association	45,000	Discovery 80 Ltd/Share	15,000
Aidis Trust	465	Ballyphilip & Ardquin Community Hall	10,000	Christian Ministry Centre	3,000	Down Cathedral	25,000
All Ireland Cancer Fund	200,000	Brain Injury Matters	44,000	Church Army	4,000	Drake Music Project	13,925
Allergy NI	25,000	Brassneck Youth	5,000	Church of the Holy Spirit	600	Dreams Come True	5,000
Alliance Youth Works	2,500	Brain Injury Foundation	3,000	Circles Network	20,000	Dreamscheme	45,000
Alzheimer's Society	250	Bright Eyes Animal Sanctuary	3,750	Citizens Advice Bureau	147,000	Drumadonald Rural Development Association	500
Amazing Brains	7,500	British & Irish Friends of Normandy	5,000	Citrah Foundation	2,500	Duke of Edinburgh Award	5,000
Angel Eyes NI	20,000	British Deaf Association	5,000	Clic Sargent	200,000	Dundonald Family & Community Initiative	5,000
Arbour House	5,000	British Friends of Normandy	5,000	Clonard Community	68,000	East Belfast Community Counselling	3,000
Ardaluin Regeneration Trust	100,000	British Heart Foundation	3,000	Cloona Child Contact Services	2,000	ECF – Links	2,000
Armagh Rhymers	2,000	British Lung Foundation	20,000	Clooney Estate Residents' Association	5,000	Echo Echo Dance Theatre Company	20,000
Artability (NI) Ltd	50,000	British Red Cross	65,000	Clubs for Young People	40,000	Ederney Community Development Trust	9,000
Arthritis Care	60,000	Broadway Workshop	250	Combat Stress	1,000	Educational Shakespeare Company	30,000
Artillery Youth Centre	6,000	Broughshane Environment Waterfowl and Wildfowl Trust	2,000	Comber Youth for Christ	5,000	Enable NI	2,650
Arts & Business	5,000	Bruiser Theatre Company	5,500	Commedia of Errors	2,000	Engage with Age	10,000
Arts Care (Clown Doctors)	12,700	Bryson Charitable Group	8,000	Compass Advocacy Network (CAN)	2,250	Equipping for Life	20,000
ArtsEkta	30,000	Bryson Lagansports	15,000	Contact a Family	20,000	F.A.S.A.	44,000
ASSISI Animal Sanctuary	6,000	Buddy Bear Trust	60,000	Context Gallery	1,000	Face Inclusion Matters	15,000
Assistance Dogs	30,000	Building Bridges Community Arts Theatre	20,000	Conway Education Centre	20,000	Family Caring Centre	2,500
Association for Real Change (NI)	10,000	Business in the Community	4,500	Cookstown & Western Shores Area Network	18,000	Family Group Conference	6,000
Audiences Northern Ireland	2,500	Cahoots NI	17,000	Cookstown MS	250	Federation of City Farms and Community Gardens	6,500
Autism NI	50,000	Cairn Lodge ABC	25,000	Corpus Christi Youth Centre	5,000	Federation of Women's Institute	4,000
Autonomie	10,000	Camara Education	25,000	Council for the Homeless	70,060	Fighting Words Belfast	75,000
AWARE	47,500	Camerata Ireland	27,500	Countryside Access & Activities Network NI	10,000	First Aid Housing Support Services	30,000
Bag Books	5,500	Camowen Outreach	2,000	Countryside Recreation NI	30,000	Fisherwick Presbyterian Church (Outreach)	32,500
Ballinran Community Association	10,000	Camphill Communities Trust NI	208,000	Corrymeela Community	170,000	Forest of Belfast	2,000
Ballyhornan Scout Centre	10,000	Cancer Focus NI	240,000	Crafts with Love	1,000	Forthspring Inter Community Group	18,000
Ballymena Family & Addicts Support Group	6,000	Cancer Fund for Children	150,000	Creative Writers Network	1,600	Fortwilliam & Macrory Presbyterian Church (Outreach)	75,000
Bangor Drama	160,000	Cara Friend	20,000	Crescent Arts Centre	15,000	Fostering Network	12,000
Barnardo's Northern Ireland	230,000	Care in Crisis	4,900	Crisis	500	Foyer Federation	15,000
Be Safe Be Well	14,500	Caring Breaks	12,000	Croft Community	277,500	Foyle Down Syndrome Trust	14,800
Belfast Activity Centre	165,100	Carrickfergus Alcohol & Drug Advisory Group	4,750	Crosskennan Animal Sanctuary	11,190	Foyle Hospice	30,000
Belfast Arthroplasty Trust	7,500			Crossroads Care NI	50,000		
Belfast Buildings Trust	250,000			Cruse Bereavement	18,000		

Donations 2003-2022

	£		£		£		£
Foyle Women's Aid	23,000	Huntington's Disease Association	24,000	Make-A-Wish Foundation UK	5,000	(Public Art Work)	
Friends in Action (INTL) NI	5,000	Include Youth	20,000	Marie Curie	340,000	Newtownabbey Senior Citizens Forum	9,000
Friends of Brae Valley - EMI Older Persons Trust	2,600	incredAble	15,000	Maydown Community Association	10,000	Newtownards Road Women's Group	2,650
Friends of Glenariffe	30,000	Institute of Orthopaedics	10,000	Mayo Peace Park	22,775	Northern Ireland Amenity Council	2,000
Friends of Lissan House	40,000	Integrated Education Fund	85,000	Medicins Sans Frontieres	10,000	Northern Ireland Cancer Fund for Children	145,000
Friends of Portaferry Presbyterian Church	15,000	Integrated Village Development Trust	15,000	Men Against Cancer Foundation	20,000	Northern Ireland Chest, Heart & Stroke Association	100,000
Friends of the City of Belfast Youth Orchestra	25,000	Inter Church Addictions Project	2,000	Mencap	300,000		
FSID	1,750	Inter Estate Partnership	4,000	Meningitis Now	30,000	Northern Ireland Children's Holiday Scheme	4,600
Gerry Rogan Initiative Trust	10,000	Inverbrena Community Association	5,000	Merville House	270,135	Northern Ireland Children's Hospice	160,000
Girlguiding Ulster	100,000	Kairos Enterprises	5,000	Merville Residents Association	1,000	Northern Ireland Community Addiction Service	5,000
Glen Parent Youth Group	15,000	Keep Northern Ireland Beautiful	45,000	Methodist City Mission for Homeless Men	1,500		
Glenarm Buildings Preservation Trust	20,000	Kids in Control	3,000	Methodist Historical Society of Ireland	1,500	Northern Ireland Foundation	5,000
Go Kids Go	5,000	Kids Together	60,000	Mexico Child Link	4,500	Northern Ireland Hospice	615,000
Goliath Trust	20,000	Kilcooley Allotments	6,000	MHS Heritage and Culture Ltd	20,000	Northern Ireland ME Association	6,000
Gracehill Old School Trust	15,000	Kilcreggan Homes Ltd	90,000	Millennium Forum	5,000	Northern Ireland Memorial Fund	100,000
Grand Opera House	300,000	Kilkeel Parish Bridge Association (JIMS)	7,000	Molly & Mia Foundation	5,000	Northern Ireland Outward Bound Association	3,500
Green Shoot Productions	67,500	Kinder Community House	8,000	Moneydarragh Community Hub	30,000	Niamh Louise Foundation	16,000
Greenlight Gateway	17,500	Kinship Care NI	5,000	Monkstown Boxing Club (Education Outreach)	5,000	NICHS Ltd	5,000
Greysteel Community Association	23,000	Knockagh Monument-Carrickfergus Borough Council	3,500			NI Friedreich's Ataxia Group	1,500
Groundwork NI	39,500			Mosside Development Group	26,500	Nite Lite	1,800
Grow	25,000	L.A.T.C.H	12,400	Motor Neurone Disease Association	15,000	North Atlantic Salmon Fund NI	10,000
Guide Dogs for the Blind Association	3,615	La Dolce Vita	4,000	Mount St Catherine's Out of Schools Club	3,000	NOW Project	50,000
Habitat for Humanity	222,733	Lagan Legacy	67,500	Mourne Heritage Trust	9,416	NSPCC Northern Ireland	32,500
Haemochromatosis	42,932	Lagan Watersports	8,813	Mourne Stimulus	1,745	Oasis Caring in Action	5,000
Harmoni	20,000	L'Arche Belfast	44,000	Multiple Sclerosis Society NI	55,750	Oh Yeah Music Centre	15,000
Harmony Community Trust	6,000	Larne Borough Council (Gobbins Path)	200,000	Multiple Sclerosis Trust	10,190	Old Belmont School	122,000
Harmony North	5,000	Larne Community Centre	5,000	Muscular Dystrophy UK	7,500	One Equine	10,000
Headway	31,500	Larne Sea Cadets	2,000	Muscular Dystrophy Campaign	13,500	Open Arts	7,500
Hearing Dogs for Deaf People	5,000	Learning to Grow	31,000	Music in Hospitals	6,500	Opera Fringe NI	10,000
Hearing Link	20,000	Leonard Cheshire	215,000	Music Theatre 4 Youth Ltd	40,225	Orbis for Bangladesh	1,500
Hearth Revolving Fund	45,000	Liberty Consortium	8,424	Mustard Seed Group	2,500	Orchardville	67,000
Help the Aged	16,000	Life NI	10,000	My Name is Doddie Foundation	500	Outdoor Recreation NI	22,000
High Kirk Social Action in our Community	6,200	Lighthouse Ltd	4,000	Myasthenia Gravis Association	2,000	Oxygen Therapy Centre	25,451
Hillcrest Trust	3,000	Ligoniel Family Centre	1,000	Myaware	2,600	P.E.A.T (Parents' Education as Autism Therapists)	60,000
Hillcroft Special School PTA	32,240	Ligoniel Improvement Centre	1,000	National Autistic Society	40,000		
Hilltop & Glenluce Care Ltd	5,000	Lilac Cancer Support	20,000	National Deaf Children's Society	6,000	Parenting NI	7,500
Hollywood Family Trust	10,000	Lilac Project	20,000	National Museums Northern Ireland	200,000	Parents & Friends Association - Donkey	8,000
Hollywood Old School Preservation Trust	20,000	Lisburn & District Scout Council	3,500	National Trust	235,000	Assisted Therapy Centre	
Hollywood Rudolf Steiner School	5,000	Lisburn Sea Cadets	3,500	National Youth Choir	3,000	Parkinson's UK	30,000
Hollywood Youth Trust	14,000	Little Orchids Children's Centre	18,000	Neillsbrook Community	5,000	PHAB (NI) Independent Living	31,000
Home Start	7,326	Live Music Now Ireland	20,000	Development Group		PIPS	25,000
Homeplus NI	35,044	Love for Life	14,000	New Lodge & Duncairn Community Health Partnership	2,500	Portglenone Enterprise Group	20,000
Hope Centre	2,000	Lyric Theatre	406,757			Portrush Sea Cadets	3,500
Hope UK NI	5,000	MacMillan Cancer Support	145,000			Positive Futures	45,000
Horn of Africa People's Aid	12,000	MACS	30,000			Positive Life	45,585
Hostelling International NI	93,300	Macular Society	16,000			Praxis Care	6,000
		Mainstay DRP	50,000			Pregnancy Resource Centre	2,000

Donations 2003-2022

	£		£		£		£
Presbyterian Historical Society of Ireland	2,000	Share Centre	7,350	The Gurkha Welfare Trust	25,000	Ulster Historic Churches Trust	2,500
Prison Fellowship NI	90,000	Shopmobility Belfast	31,000	The HIV Support Centre	20,000	Ulster Historical Foundation	17,000
Project Ballynahinch	1,500	Simon Community	75,000	The Irish Association	15,000	Ulster Orchestra	402,500
Public Achievement	3,500	Sion Mills Buildings Preservation Trust	20,000	The John Hewitt Society	7,000	Ulster University	750,000
Quaker Service	65,000	Sir Hans Sloane Memorial Trust	3,450	The Kairos Centre	4,000	Ulster Waterways Group	17,500
Queen Street Studios	5,000	Skill NI	4,000	The Lady Hoare Trust	500	Ulster Youth Choir	14,500
Queen's University of Belfast	1,553,525	St Vincent de Paul Society	23,500	The Lighthouse Trust	7,500	Ulster Youth Orchestra	86,500
Railway Preservation Society of Ireland	30,000	Solas	35,000	The Lilac Service	10,000	UNICEF	1,000
Raleigh International	35,000	Sole Purpose	4,000	The Linen Hall Library	153,146	Union Theological College	30,000
RAMS (Race Against Multiple Sclerosis)	20,664	SOS Bus NI Ltd	105,000	The Link	25,000	Unit T	1,000
Rathfriland District and Regeneration Company Ltd	100,000	South Lough Neagh Regeneration Association	50,000	The MAC	430,000	United Parishes of St John and St Ninian	280
Rathgael Gymnastics & Tumbling Club	7,500	Southern Area Hospice	85,000	The Mark Pollock Discretionary Trust	1,250	USPCA	6,500
Rathlane Care Farm	4,000	SPEAC	105,000	The Oak Partnership	2,000	Verbal Arts Centre	30,000
Riding for the Disabled	50,000	Special Olympics Ireland	15,000	The Open House Festival	5,000	Via Wings	9,000
Read for Good	7,936	Speechmatters	15,000	The Open University	25,000	Victim Support	30,000
Reconnect	25,000	Spinal Injuries Association	12,000	The Playhouse	20,000	Vineyard Compassion	43,000
Rehability	5,000	Springboard Opportunities	70,000	The Prince's Trust	215,000	Voice of Young People in Care	69,620
Relate NI	4,000	Springfield Charitable Association	15,000	The Pushkin Trust	82,000	Voluntary Arts Ireland	8,000
Replay Productions	59,670	SS Nomadic Charitable Trust (Titanic)	200,000	The River Bann & Lough Neagh Association	30,000	Voluntary Service Lisburn	5,000
Re-Solv	8,000	St Columb's Hall	40,000	The Royal British Legion	5,000	Volunteer Now	44,200
Resurgan Trust	60,000	St John Ambulance	40,000	The Royal Hospital Chelsea Appeal Ltd	1,000	Wesley Trust Methodist	30,000
River Valley Development Ass Ltd	3,000	St Patrick's Parish Church	50,000	The Salvation Army	15,000	Whitehouse Preservation Trust	65,000
Riverside School	350	Stadium Projects	10,000	The Scout Association NI Scout Council	25,000	Whiterock Children's Centre	20,000
RNIB Northern Ireland	17,000	Stage Beyond Theatre Company	8,000	The Skainos Project	120,000	Wildfowl & Wetlands Trust	306,054
Romanian Partnership Committee	4,000	Step by Step NI Ltd	2,500	The Somme Nursing Home	21,000	Willow Parish Community Association	20,000
Rosie's Trust	1,500	Street Soccer NI	19,000	The Springboard Charity	2,000	Women's Aid	70,000
Rosstulla Parents Association	8,000	Stroke Association	30,000	The Turnaround Project	18,000	Woodland Trust	3,575
Rotary Clubs of Belfast Centennial Project	12,000	Target Ovarian Cancer	3,000	The Tyrone Guthrie Centre	180,000	Workers Educational Association	15,000
Rowallane Community Hub	15,000	The 174 Macrory Centre	20,000	The Ulster Orchestra Foundation	5,000	Workforce Training Services Ltd	50,000
Royal British Legion	4,000	The Advantage Foundation	20,000	The Village Garden (Broughshane) Ltd	10,000	Workwest	6,000
Royal Naval Association	10,000	The Beat Initiative	5,000	The Welcome Organisation	7,500	YMCA (Various)	263,000
RSPB NI	39,850	The Blind Centre	40,000	The Wider Circle	500	Young at Art	7,500
Royal Society of Ulster Architects	30,000	The Boys' Brigade	258,800	Tidal	810	Young Enterprise NI	20,000
Rudolf Steiner School	18,500	The Bridge Association	7,750	Tinderbox Theatre Company	15,000	Youth Action	167,104
Sailortown Regeneration Group	5,000	The Bushmills Trust	5,000	TinyLife	50,000	Youth Initiatives	66,000
Samaritans	78,000	The Bytes Project	35,000	Titanic Foundation	30,000	Youth Link	50,000
Sandy Row Amateur Boxing Club	1,000	The Cedar Foundation	171,668	Tools for Solidarity	23,500	Youth Sports Trust	2,000
Saphara	15,000	The Child Brain Injury Trust	2,000	Townsend Presbyterian Church (Outreach)	300,000	Zero 8 Teen	10,000
Save the Children	5,000	The Community Foundation Northern Ireland	185,000	Training for Women Network	10,000		
Scrabo Catering Enterprises	1,000	The Courthouse Kesh	5,000	Trauma and Orthopaedic Research Charity (BART)	40,000		
Seacourt Print Workshop	25,000	The Cresco Trust Ltd	25,000				
Seaview Enterprises	3,000	The Disabled Drivers Association	1,250				
Self Help Africa	1,000	The Dock	10,000				
SENAC	21,000	The Dystonia Society	1,000				
SERC	6,000	The Edge Youth Centre	10,000				
Servite Trust	20,000	The Follies Trust	25,000				
		The Fostering Network	24,000				



LONDONDERRY DERRY

Women's Aid TH
FOYLE

ANTRIM

TYRONE

FERMANAGH

POSITIVE FUTURES

ARMAGH

DOWN

irish sea



ULSTER GARDEN
VILLAGES LIMITED